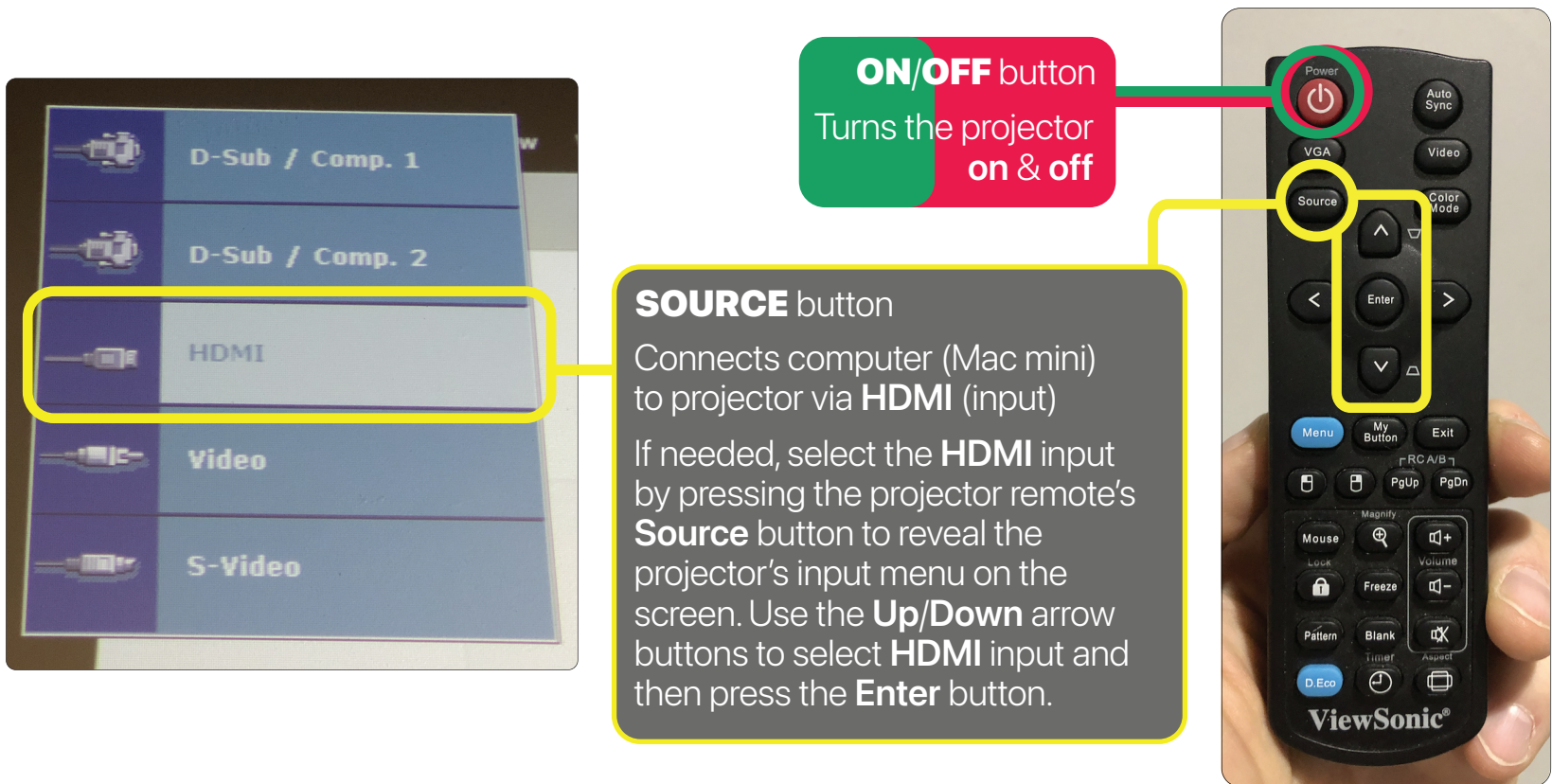


# D500 / Lecture Room | Help Sheet

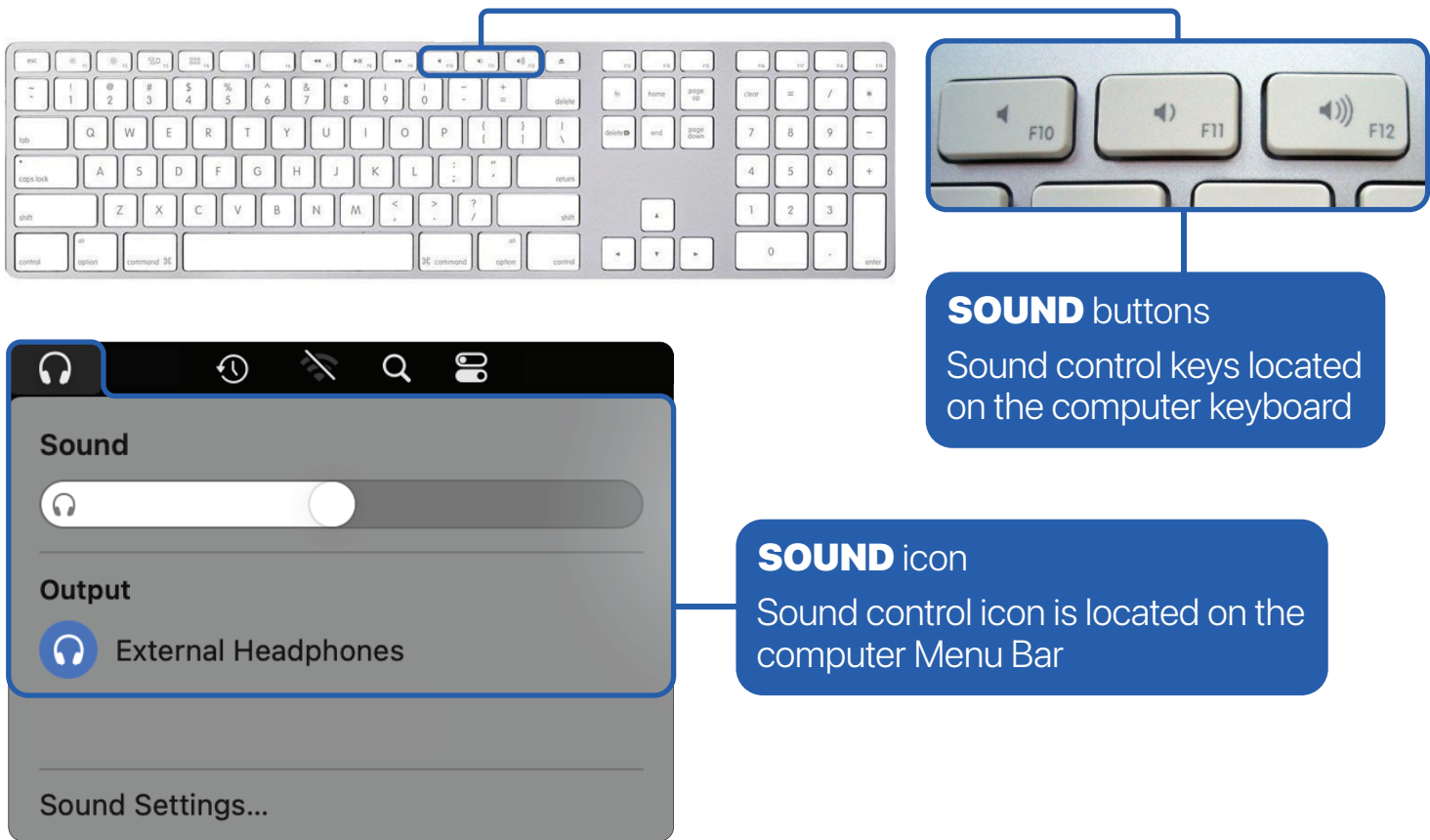
Instructions on how to use the **D500 / Lecture Room** cart's computer, a/v and video conferencing equipment, connected cables, etc.

## 1 PROJECTOR & SOUND Settings

- Projector:
- To **turn on** the projector, press the **ON/OFF** button on the remote
  - To **turn off** the projector, press the **ON/OFF** button on the remote **twice**
    - Please remember to **turn off** the projector before leaving the room
    - It's best to stand directly 4-6 feet in front of the projector and point the remote directly at it when turning it **ON/OFF**
  - If needed, press the **SOURCE** button and select input **HDMI** to connect the Mac mini to the projector



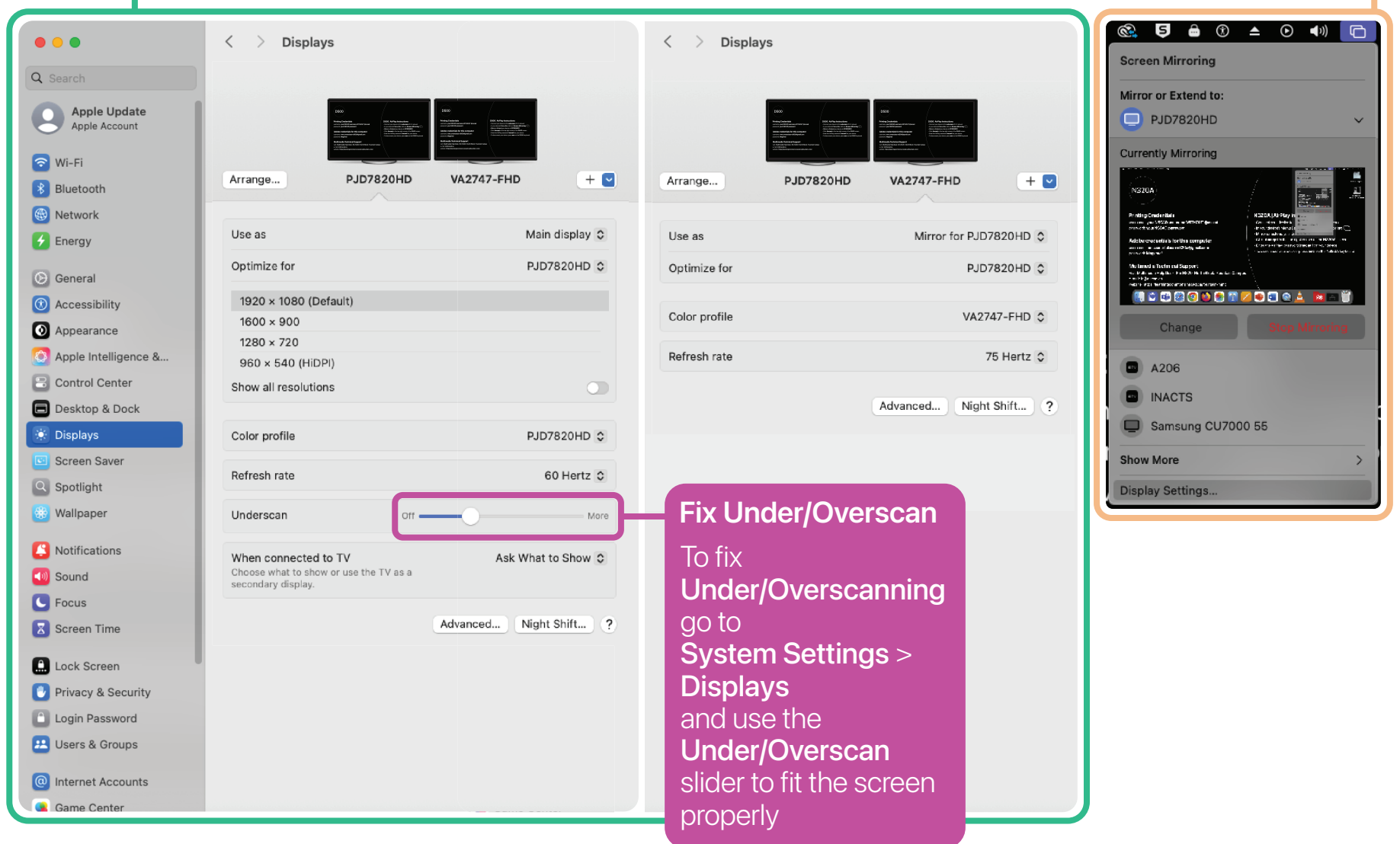
- Sound:
- Use the **sound controls** on the **keyboard** or in the **Menu Bar** to adjust the **Mac mini's** outputted volume level



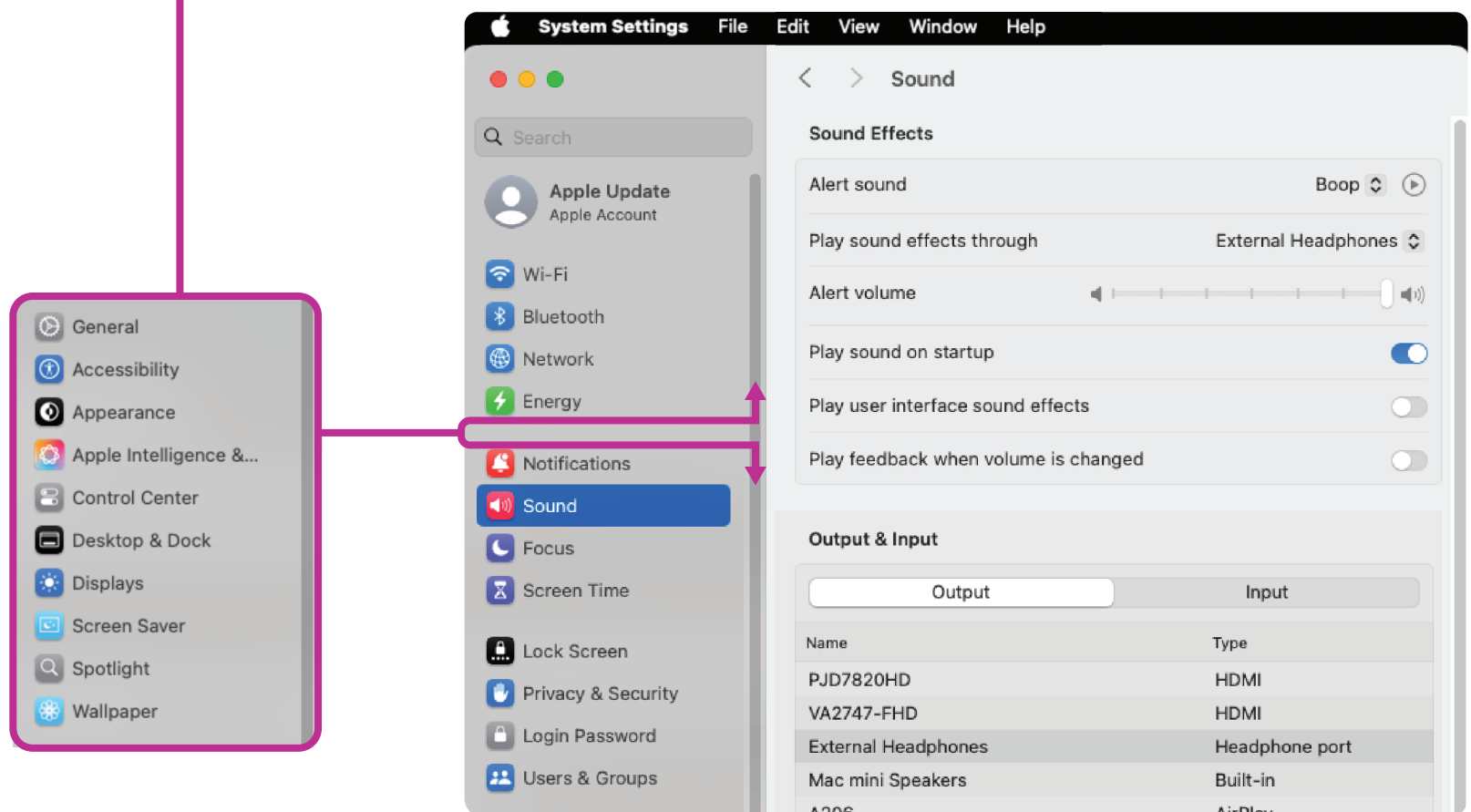
## 2 System Settings | Mac mini (computer)

Check:

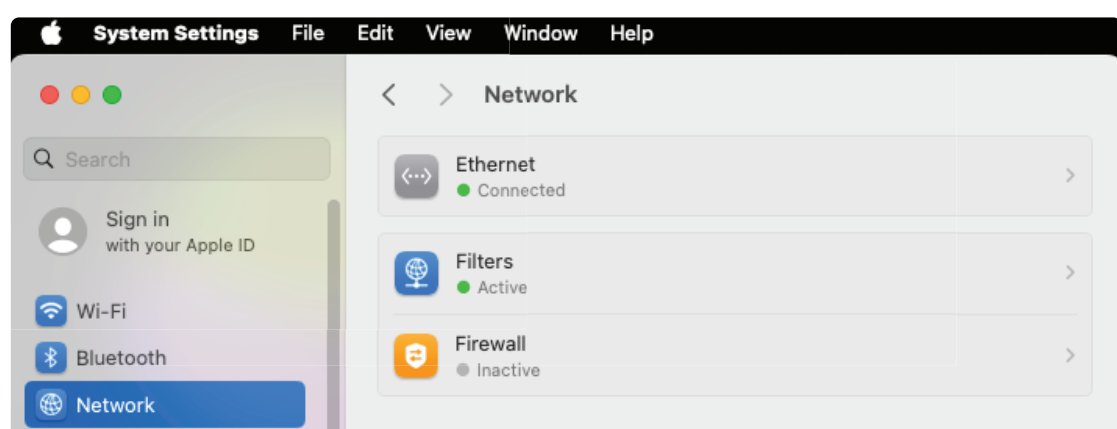
- **VIDEO:** 🍏 > System Settings > Display > PJD7820HD (Mirror/Optimize for PJD7820HD)
- **Menu Bar:** 🖥️ Screen Mirroring > Mirror to > PJD7820HD (Currently Mirroring: PJD...)



- **SOUND:** 🍏 > System Settings > Sound > Output > External Headphones (Headphone Port)
- \*Scroll down/past this group of functions in the sidebar to find/select **SOUND**

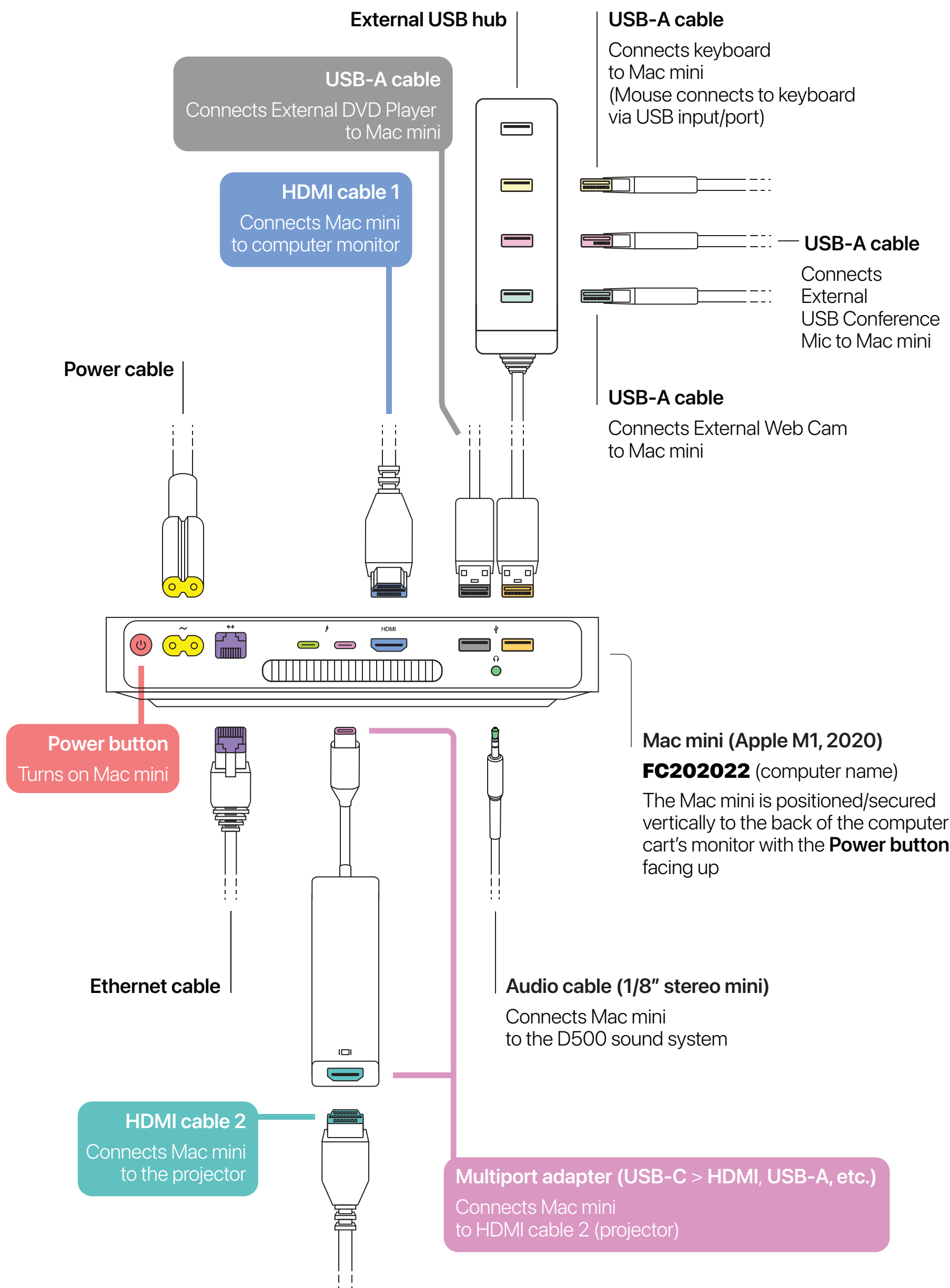


- **INTERNET:** 🍏 > System Settings > Network > Ethernet (Connected)



### Check Cable Connections

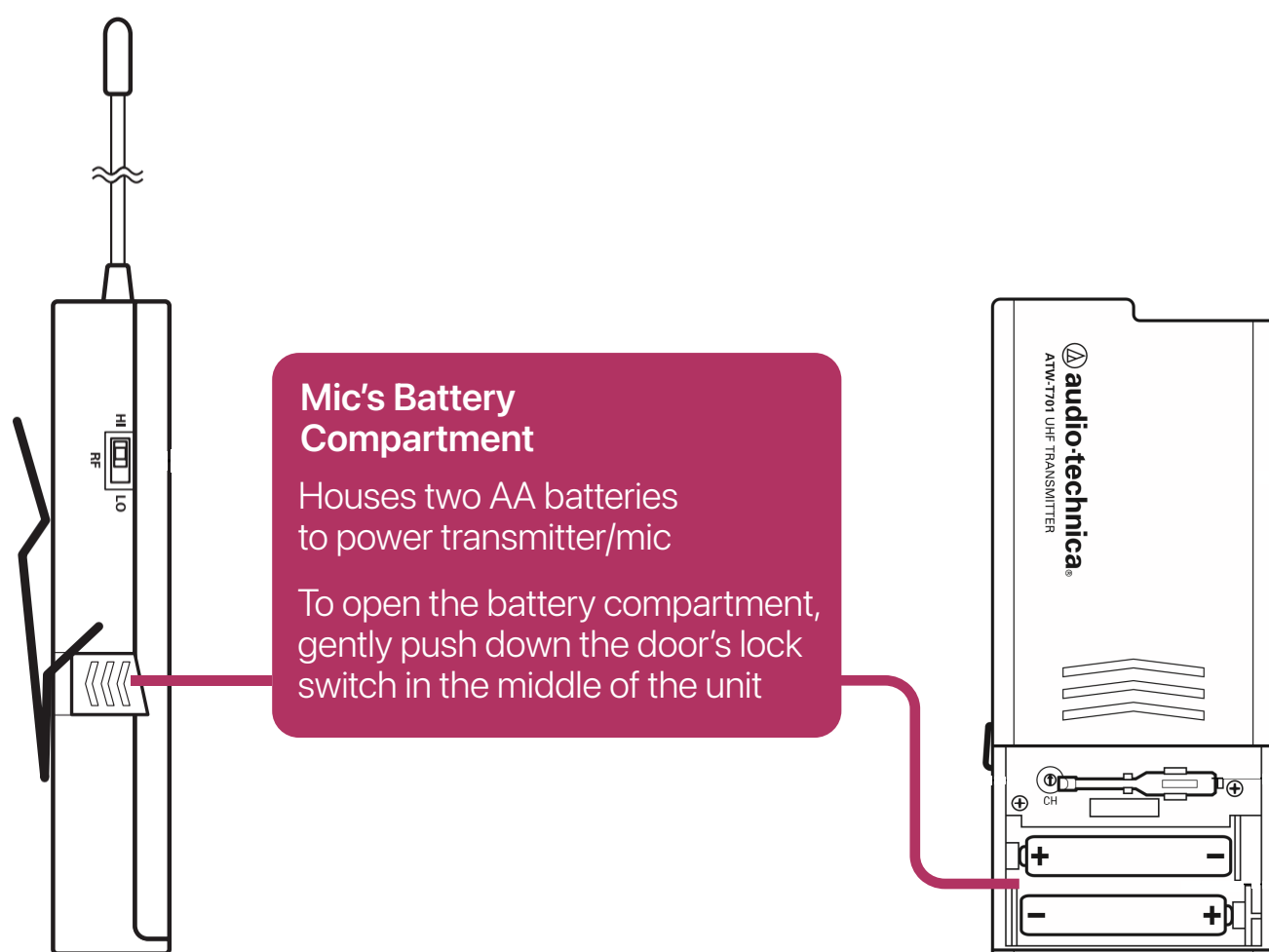
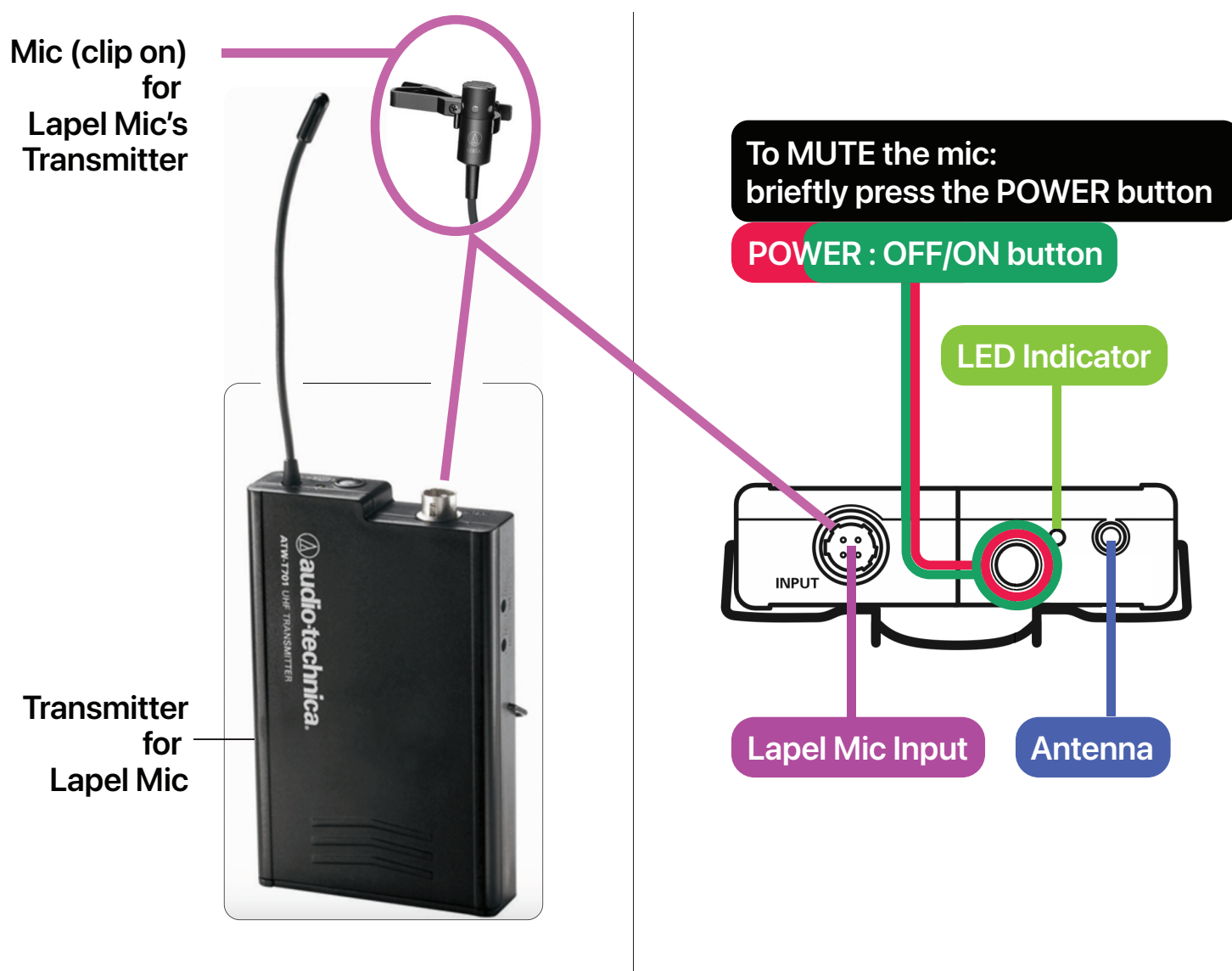
- Make sure:**
- the **Mac mini** is turned on (press **Power button** if it's turned off)
  - **HDMI cable 1** is firmly attached to the **HDMI port** on the Mac mini
  - the **Multiport adapter** is firmly attached to the **Thunderbolt / USB 4 port** on the Mac mini
  - **HDMI cable 2** is firmly attached to the **HDMI port** on the **Multiport adapter**



## Wireless Microphone Functions

### Lapel:

- To **turn on** the lapel mic, push down the power button
  - The **LED Indicator** turns **green**
  - If the **LED Indicator** is **red**, the batteries (2 AAs) are low and need replacing
- To **turn off** the lapel mic, push down the power button until **LED Indicator** is **blank**
- The lapel mic is stored in the white basket attached to the left side of the computer cart
- Volume levels for the **Wireless Lapel Mics** are set:  
Contact **Multimedia** if you need assistance adjusting the mic volume levels with the mixer





## External DVD Player

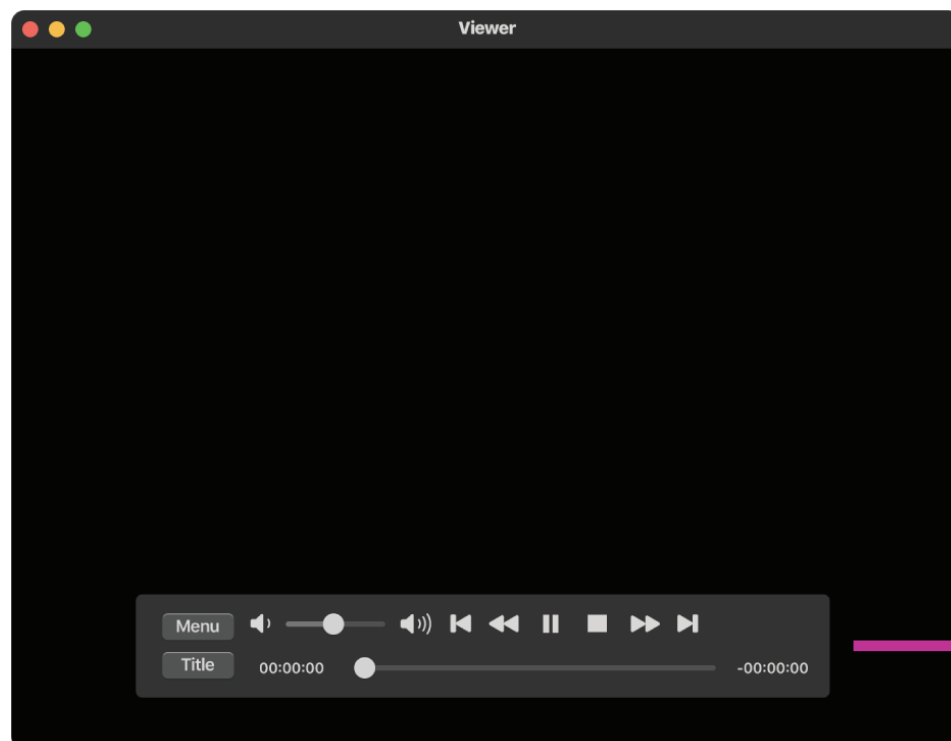
- The **External DVD Player** is installed vertically on the side of the Mac mini (computer) and connects to it via USB-A cable (see **3 Check Cable Connections**)
- To **open** the **External DVD Player's Disc Tray**, press the **EJECT** button
  - When the **Disc Tray** opens (pops out), carefully place the DVD disc onto it
  - After placing the DVD disc onto the **Disc Tray**, **close** the **External DVD Player** by gently pushing the **Disc Tray** back into the device

External  
DVD Player



EJECT button

- The **External DVD Player** will load the DVD and automatically open the "Viewer" window of **DVD Player**, a software application on the Mac mini
  - If the DVD disc doesn't play automatically, press the Space bar after the disc is recognized
  - Move the pointer anywhere over the "Viewer" window to show the playback controls ~ e.g. click play button to start the DVD's video, click menu button to access the DVD's menu, etc.
  - When finished watching the DVD, close **DVD Player** and move the DVD's icon on the desktop into the trash to eject the disc from the **External DVD Player**

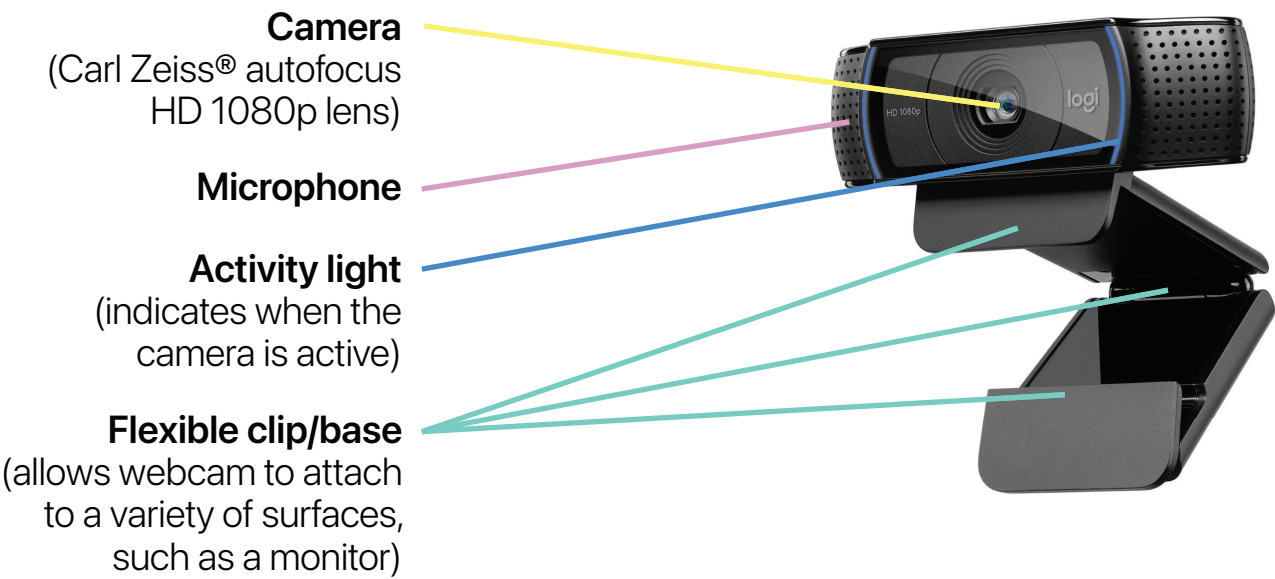


- To manually eject and retrieve the DVD disc from the **External DVD Player**, press the **EJECT** button to **open** the **Disc Tray**
  - When the **Disc Tray** opens (pops out), carefully remove the DVD disc
  - After removing the DVD disc from the **Disc Tray**, **close** the **External DVD Player** by gently pushing the **Disc Tray** back into the device

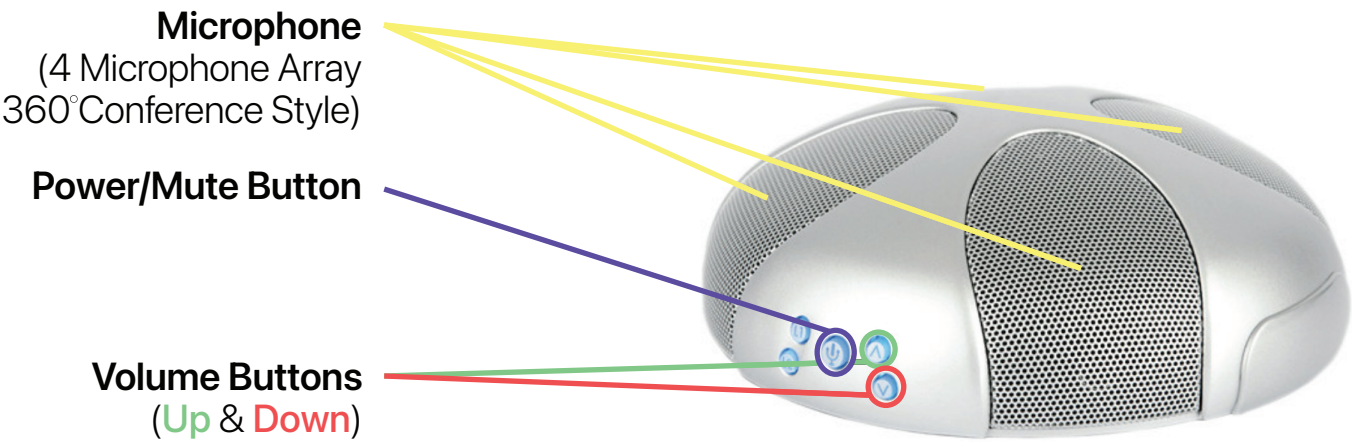
Video Conferencing | Equipment & Software

The **Logitech Web Cam & Phoenix Quattro3 USB Mic** is equipment to assist in streamlining collaboration for online classes, presentations, and meetings. They both connect to the computer’s USB Hub (installed on the monitor stand) via USB-A cables.

Logitech:  
Webcam

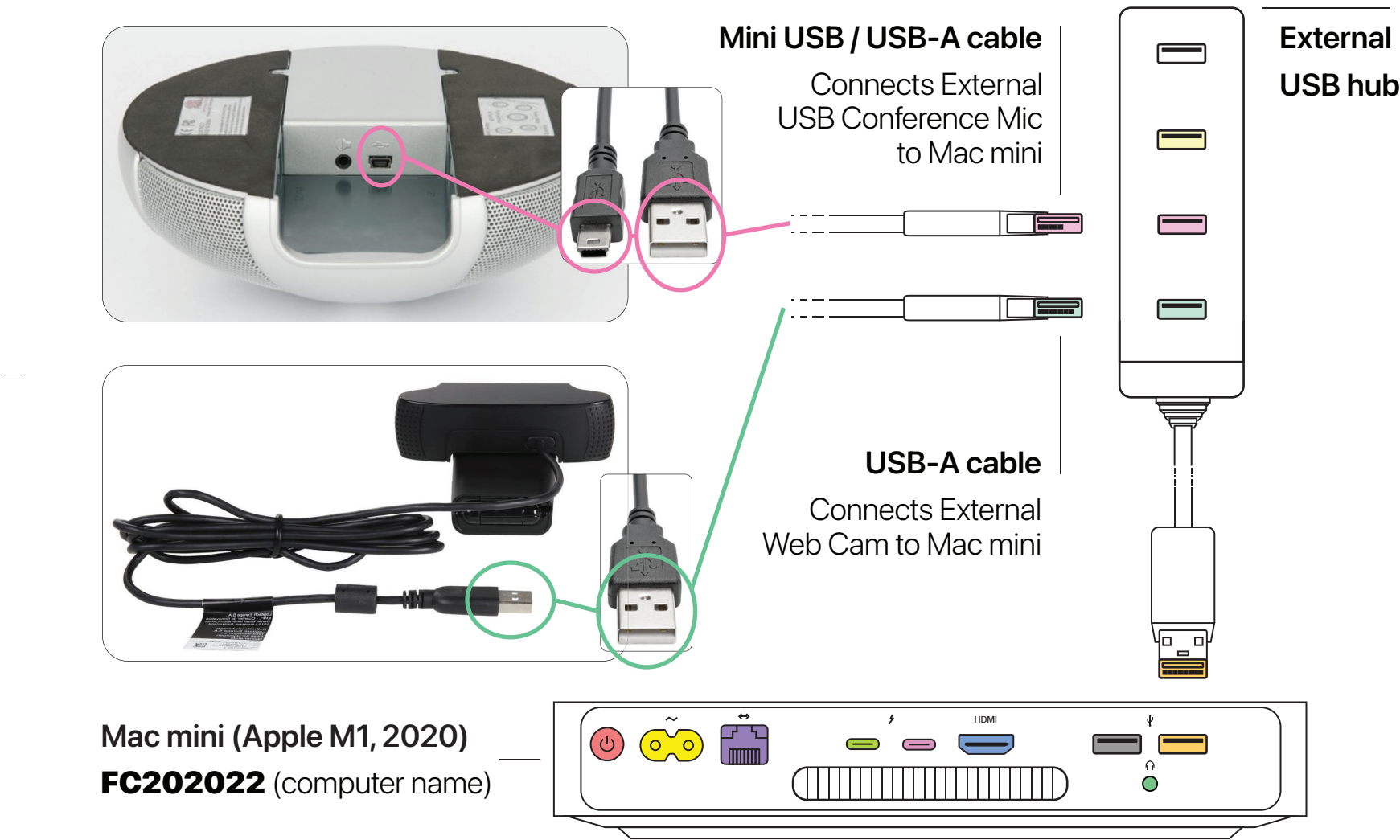


Phoenix:  
Quattro3  
USB Mic



Cables:

- The cable connections for the **Logitech Web Cam & Phoenix USB Mic** are as follows
    - The **Logitech Web Cam & Phoenix USB Mic** both connect to the Mac mini’s (computer) USB Hub via USB-A cables
- See **3 Cable Connections Diagram** & diagram below



**Virtual:**  
**Meetings**

- Using the **Logitech Web Cam & Phoenix USB Mic** for Teams video conference meetings
  - Launch your Teams meeting by clicking **Join Now**
  - Choose the following video & audio settings in your Teams meeting in conjunction with D500's **Web Cam, USB Mic** and audio system:
    - Video/Camera: **HD Pro Webcam C920** | Mic: **Phnx Quattro3**  
Speaker: **External Headphones (Built-in)**

