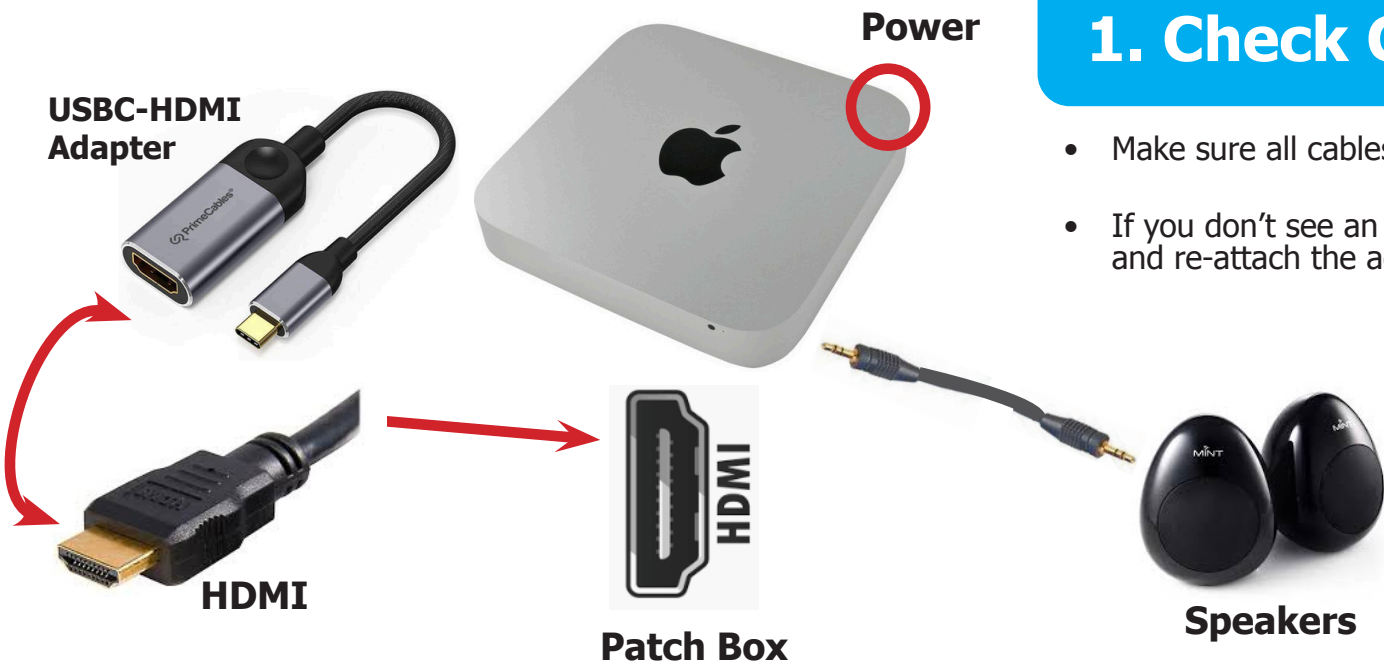


Do not turn wifi on for printing - an ethernet cable is connected!

P205 AV Set Up

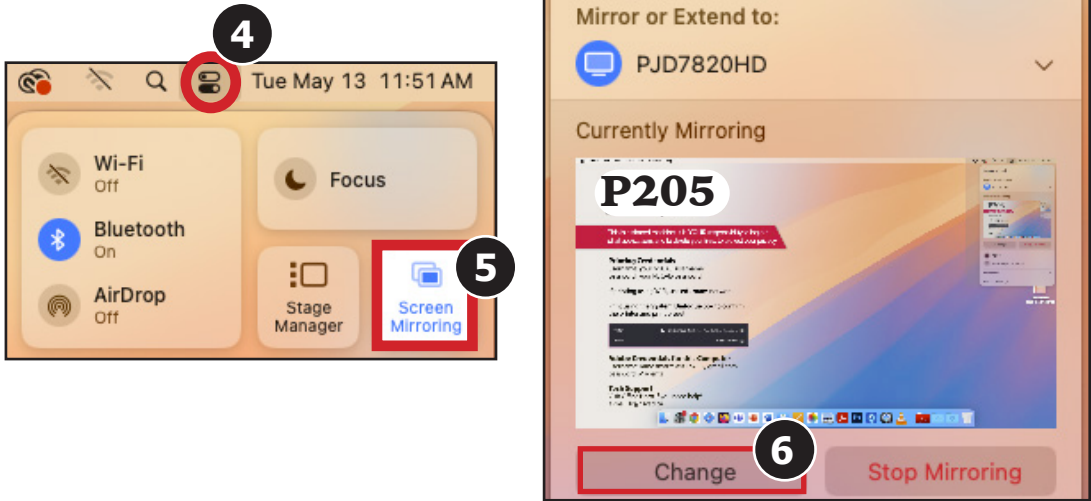
1. Check Cable Connections

- Make sure all cables and adapters are firmly connected.
- If you don't see an image, or it is very distorted, detach and re-attach the adapter.

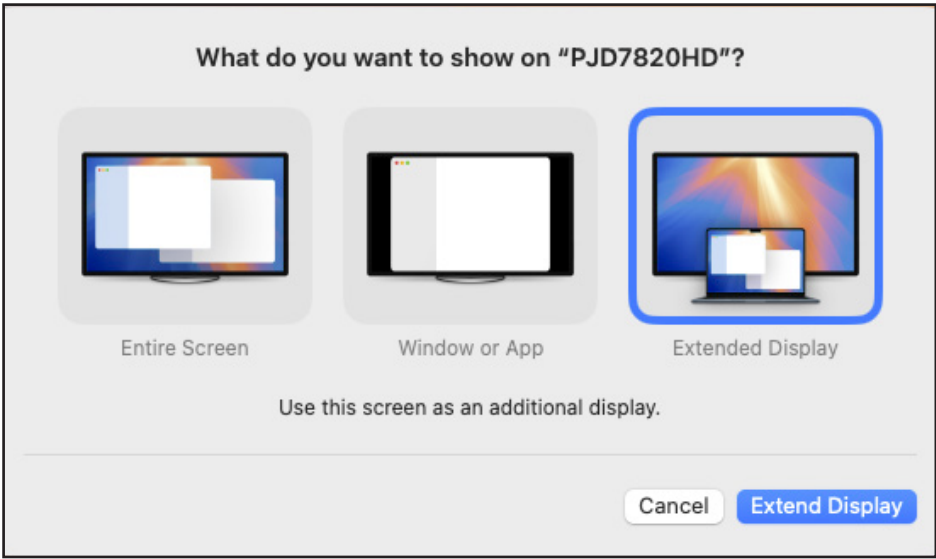


2. Projector Mode

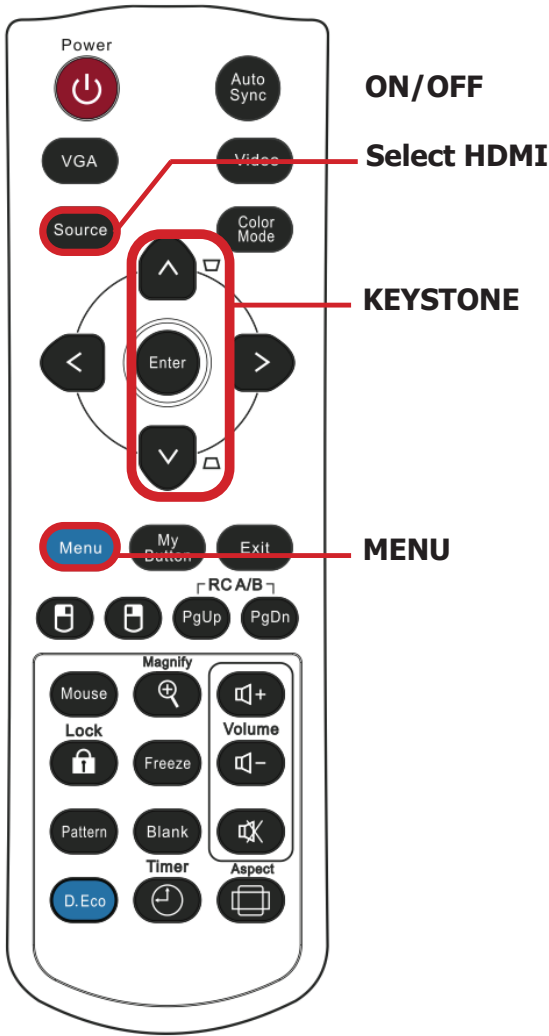
1. Turn **on** the computer first.
2. Turn **on** the projector using the remote. (point remote to projection wall)
3. Set projector input to **HDMI** with **SOURCE** button on remote.
4. To **mirror** or **extend** your image, click the **Control Centre Button** on the top right of screen.
5. Select **Screen Mirroring**.
6. Click on **Change**.



7. Select the Display Setting you would like to use.



TECH SUPPORT
Visit Office P228
email: lc@nscad.ca



DO NOT leave projector set to 4 by 3 ratio!
Press **menu** button, under **ASPECT RATIO**, select **AUTO**.

KEYSTONE IMAGE:
If image is warped, and appears as a trapezoid, use KEYSTONE buttons on remote to straighten.

If your image is cut off on the projector, go to **System Settings > Displays > Underscan** Adjust Underscan with this slider.

