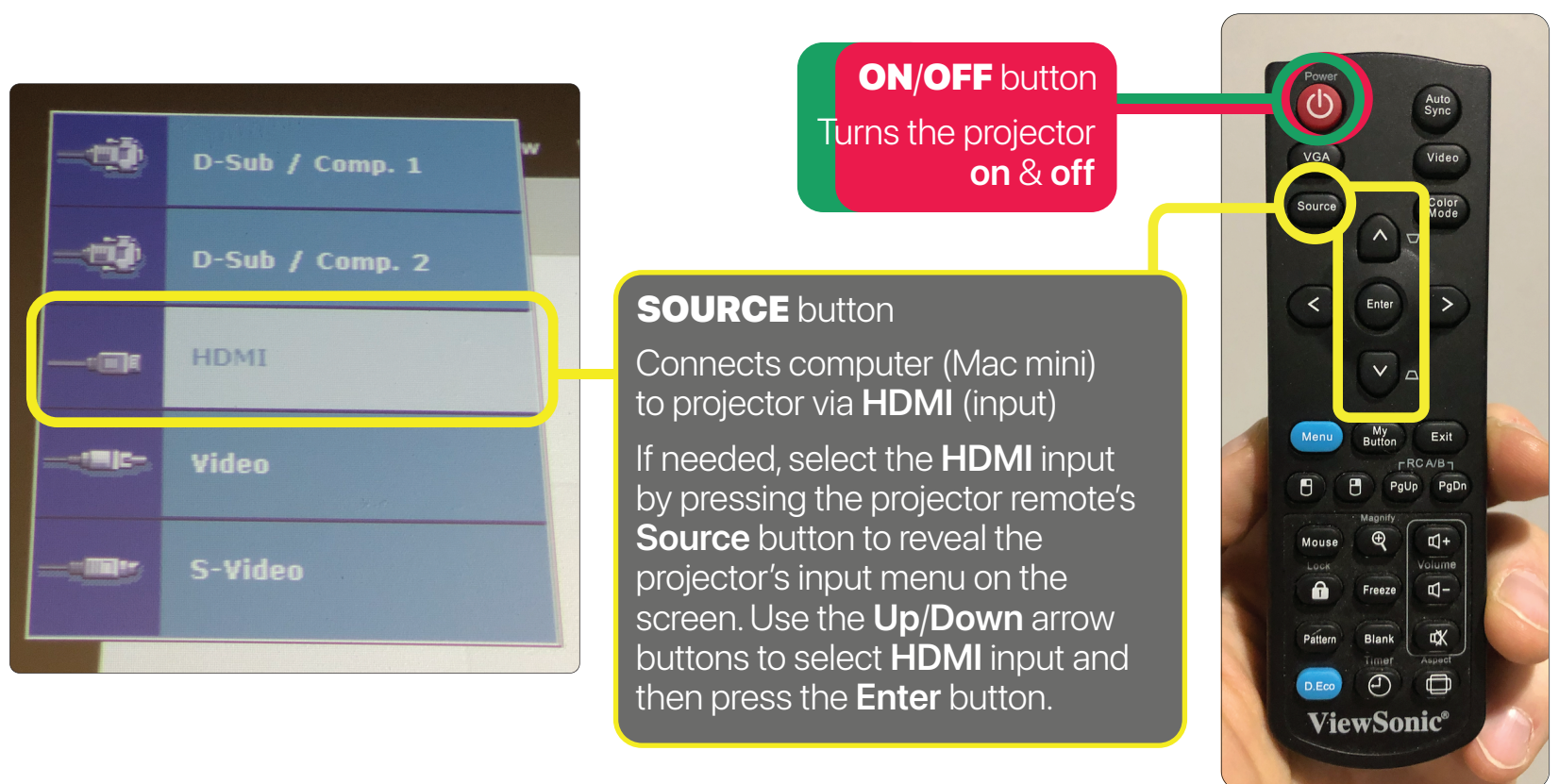


# N400 / Design Studio | Help Sheet

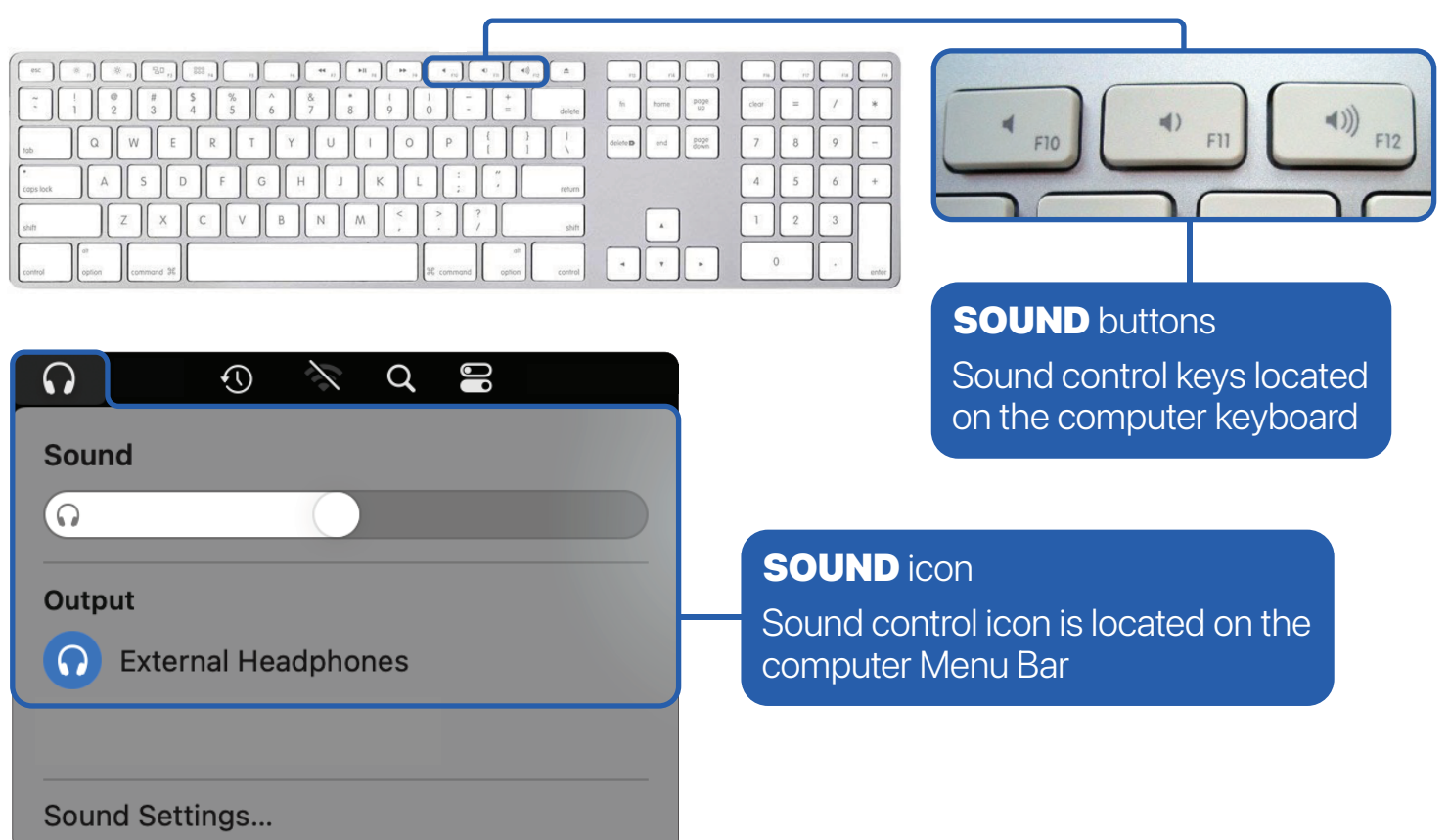
Instructions on how to use the **N400 / Design Studio** cart's computer, a/v & video conferencing equipment, connected cables, etc.

## 1 PROJECTOR & SOUND Settings

- Projector:**
- To **turn on** the projector, press the **ON/OFF** button on the remote
  - To **turn off** the projector, press the **ON/OFF** button on the remote **twice**
    - Please remember to **turn off** the projector before leaving the room
    - It's best to stand directly 4-6 feet in front of the projector and point the remote directly at it when turning it **ON/OFF**
  - If needed, press the **SOURCE** button and select input **HDMI** to connect the Mac mini to the projector

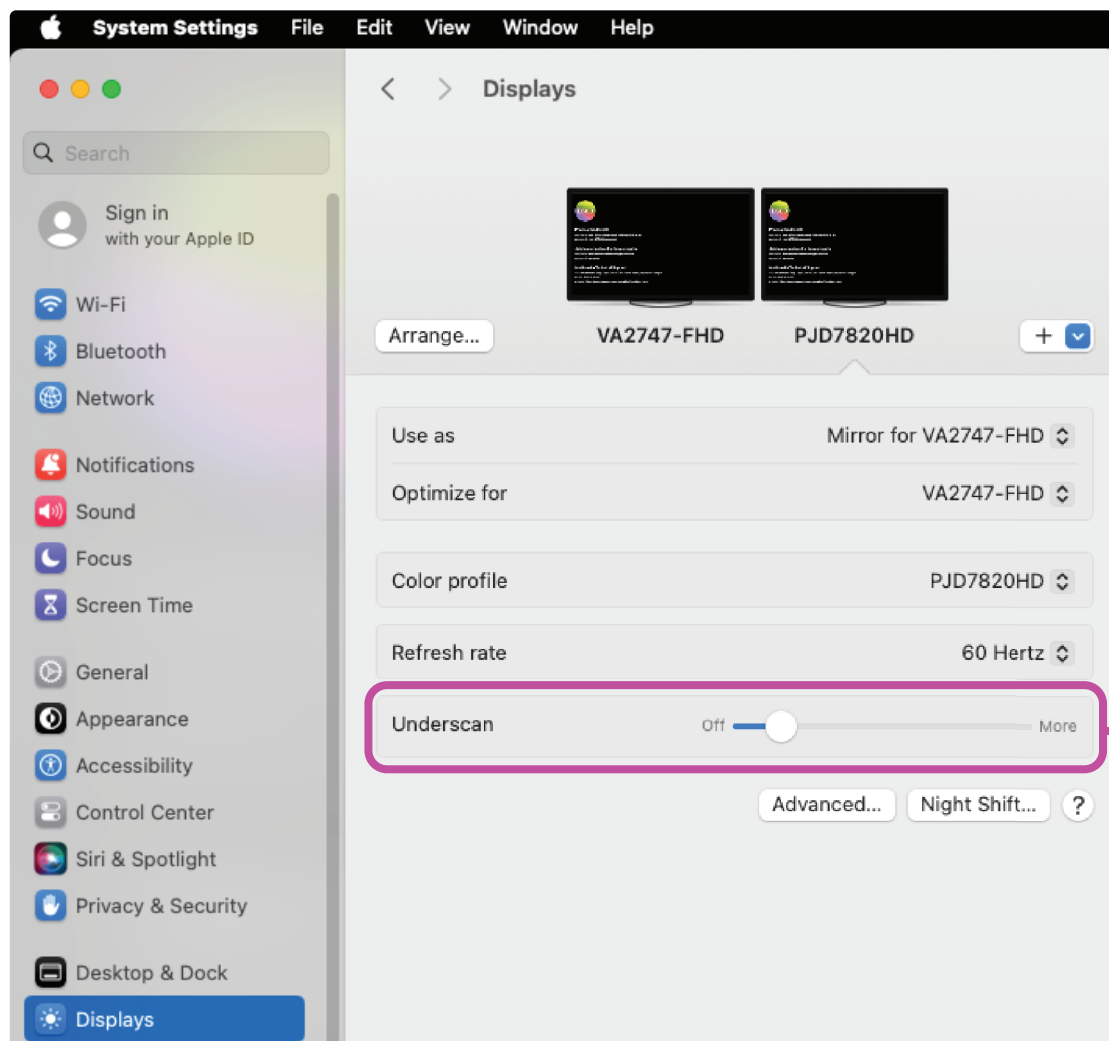


- Sound:**
- Use the **sound controls** on the **keyboard** or in the **Menu Bar** to adjust the **Mac mini's** outputted volume level



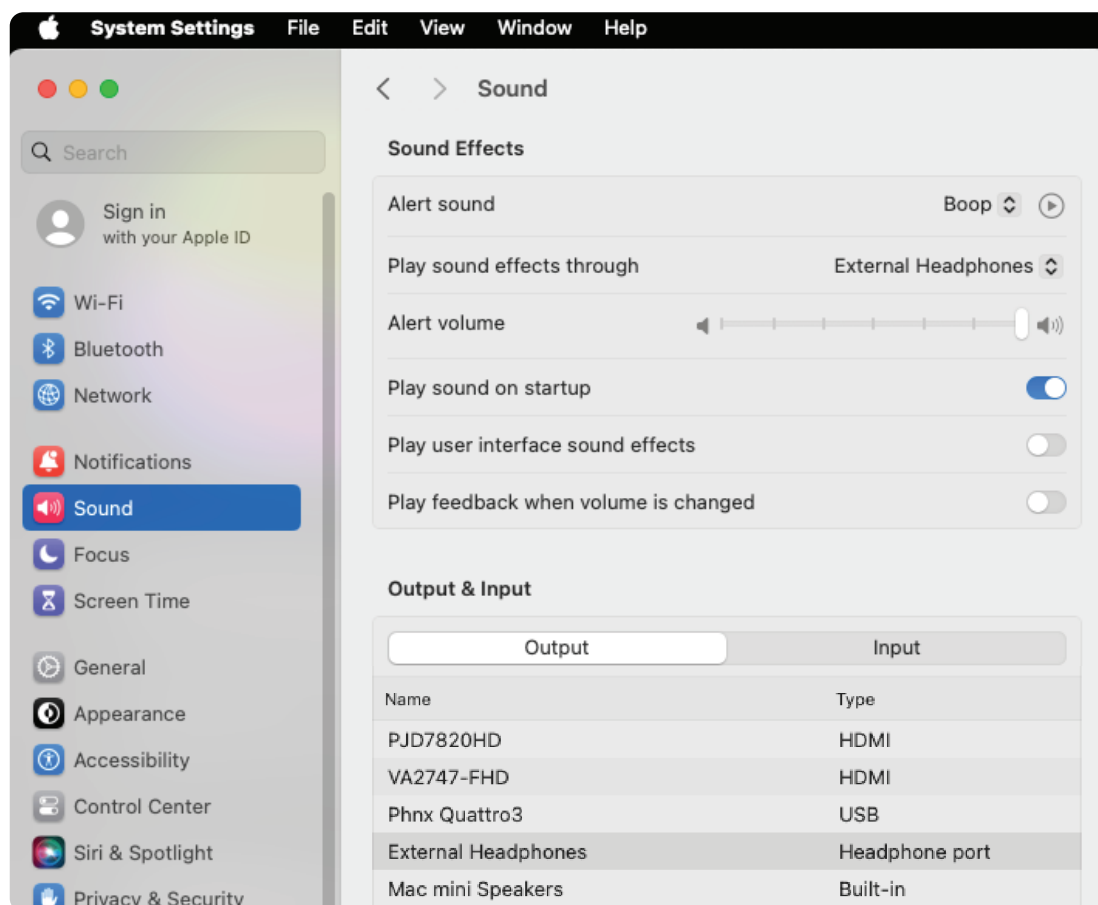
## System Settings | Mac mini (computer)

**Check:** ● **VIDEO:** 🍏 > System Settings > Display > PJD7820HD (Mirror for VA2747-FHD)

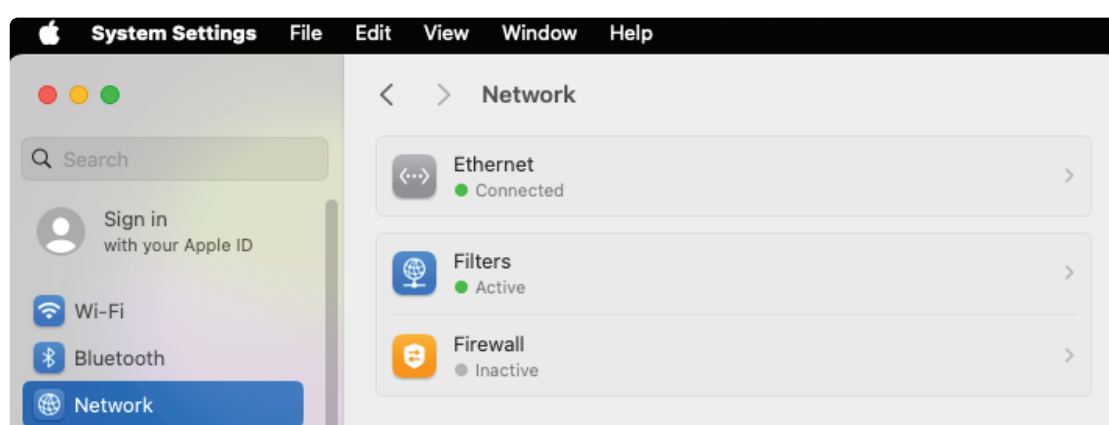


**Fix Under/Overscan**  
To fix Under/Overscanning of the projected image, go to System Settings > Displays and use the Under/Overscan slider to properly fit the computer's image

● **SOUND:** 🍏 > System Settings > Sound > Output > External Headphones

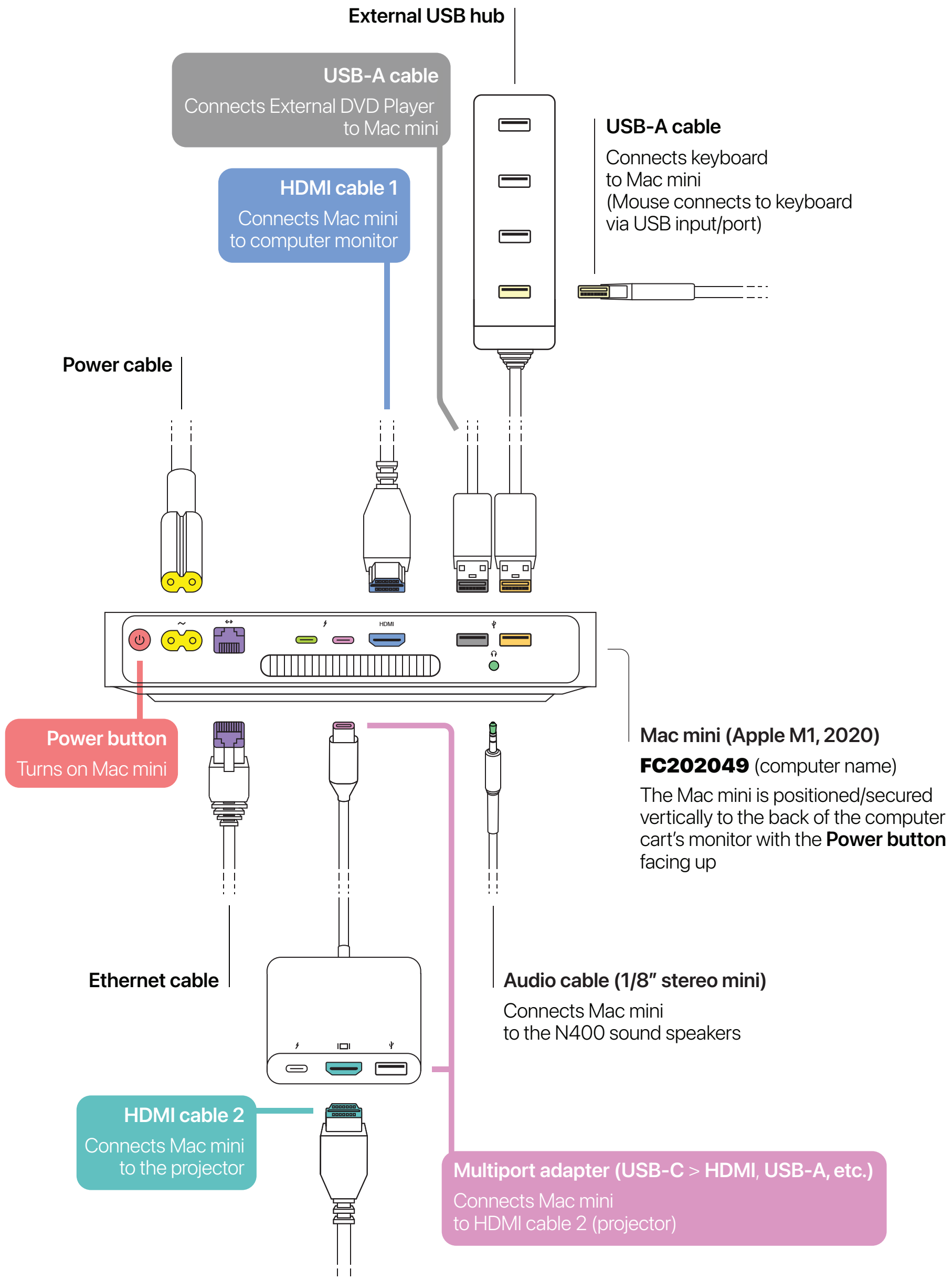


● **INTERNET:** 🍏 > System Settings > Network > Ethernet (Connected)



## Check Cable Connections

- Make sure:**
- the **Mac mini** is turned on (press **Power button** if it's turned off)
  - **HDMI cable 1** is firmly attached to the **HDMI port** on the Mac mini
  - the **Multiport adapter** is firmly attached to the **Thunderbolt / USB 4 port** on the Mac mini
  - **HDMI cable 2** is firmly attached to the **HDMI port** on the **Multiport adapter**

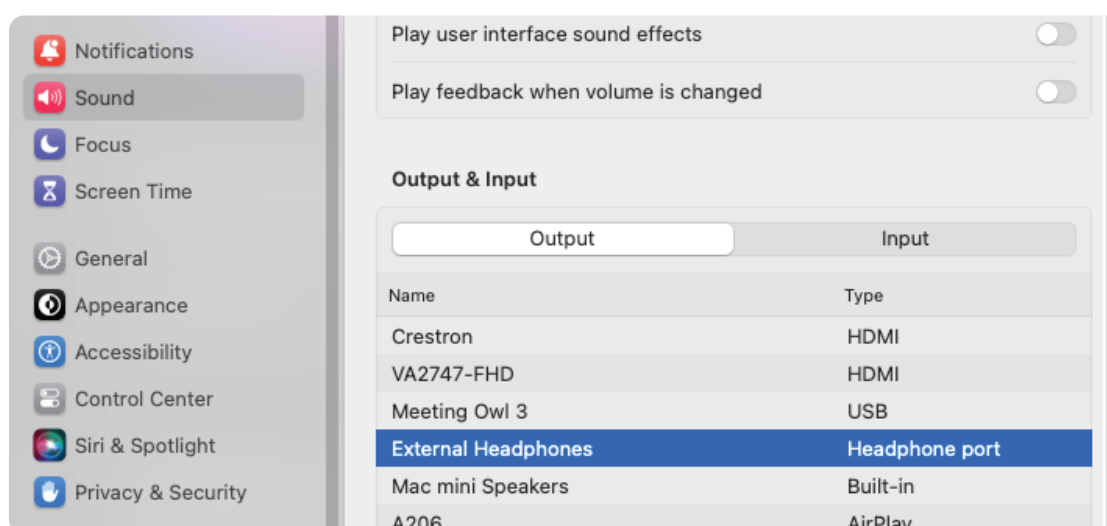


## Speakers | Logitech Computer Speakers

- Speaker:**
- When the **Logitech Speakers** are turned off the **POWER LED Indicator** is **blank**
  - To **turn on** the **Logitech Speakers**, turn the **POWER/VOLUME** dial on the right speaker all of the way clockwise (the **LED Indicator** turns **on**) and set them to maximum volume
  - For a more robust sound (extra bass), turn the **TONE** dial on the side of the right speaker to increase or decrease the bass
  - Please note, the **Logitech Speakers** are powered via a **Power Adapter** & connects to the Mac mini's (computer) **Headphone input** via **1/8" stereo mini audio cable**



**Computer:** ● **SOUND:** **Apple > System Settings > Sound > External Headphones**



## External DVD Player

- The **External DVD Player** is installed vertically on the side of the Mac mini (computer) and connects to it via USB-A cable (see **3 Check Cable Connections**)
- To **open** the **External DVD Player's Disc Tray**, press the **EJECT** button
  - When the **Disc Tray** opens (pops out), carefully place the DVD disc onto it
  - After placing the DVD disc onto the **Disc Tray**, **close** the **External DVD Player** by gently pushing the **Disc Tray** back into the device



- The **External DVD Player** will load the DVD and automatically open the "Viewer" window of **DVD Player**, a software application on the Mac mini
  - If the DVD disc doesn't play automatically, press the Space bar after the disc is recognized
  - Move the pointer anywhere over the "Viewer" window to show the playback controls ~ e.g. click play button to start the DVD's video, click menu button to access the DVD's menu, etc.
  - When finished watching the DVD, close **DVD Player** and move the DVD's icon on the desktop into the trash to eject the disc from the **External DVD Player**



- To manually eject and retrieve the DVD disc from the **External DVD Player**, press the **EJECT** button to **open** the **Disc Tray**
  - When the **Disc Tray** opens (pops out), carefully remove the DVD disc
  - After removing the DVD disc from the **Disc Tray**, **close** the **External DVD Player** by gently pushing the **Disc Tray** back into the device