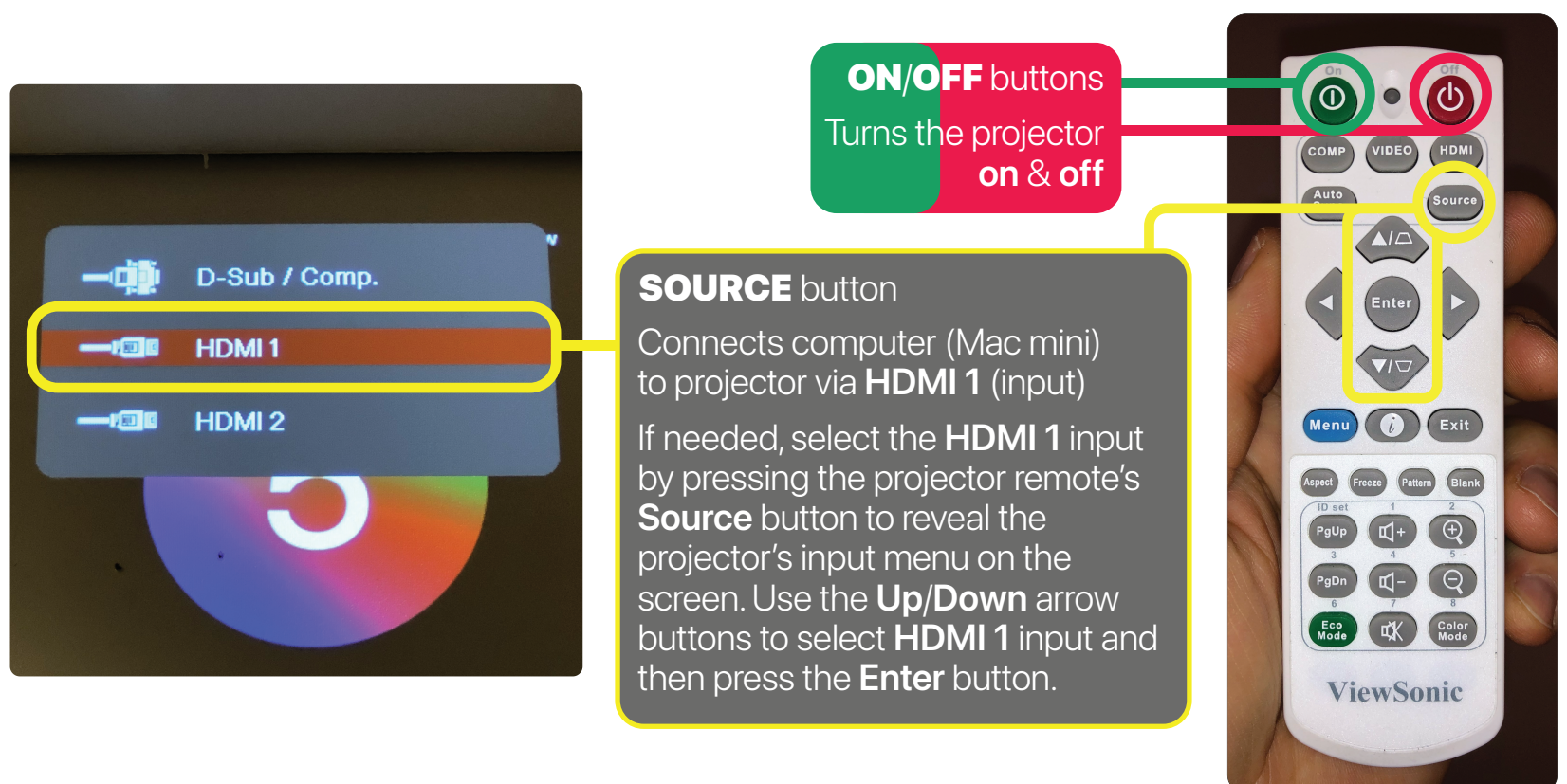


N320F / Computer Lab | Help Sheet

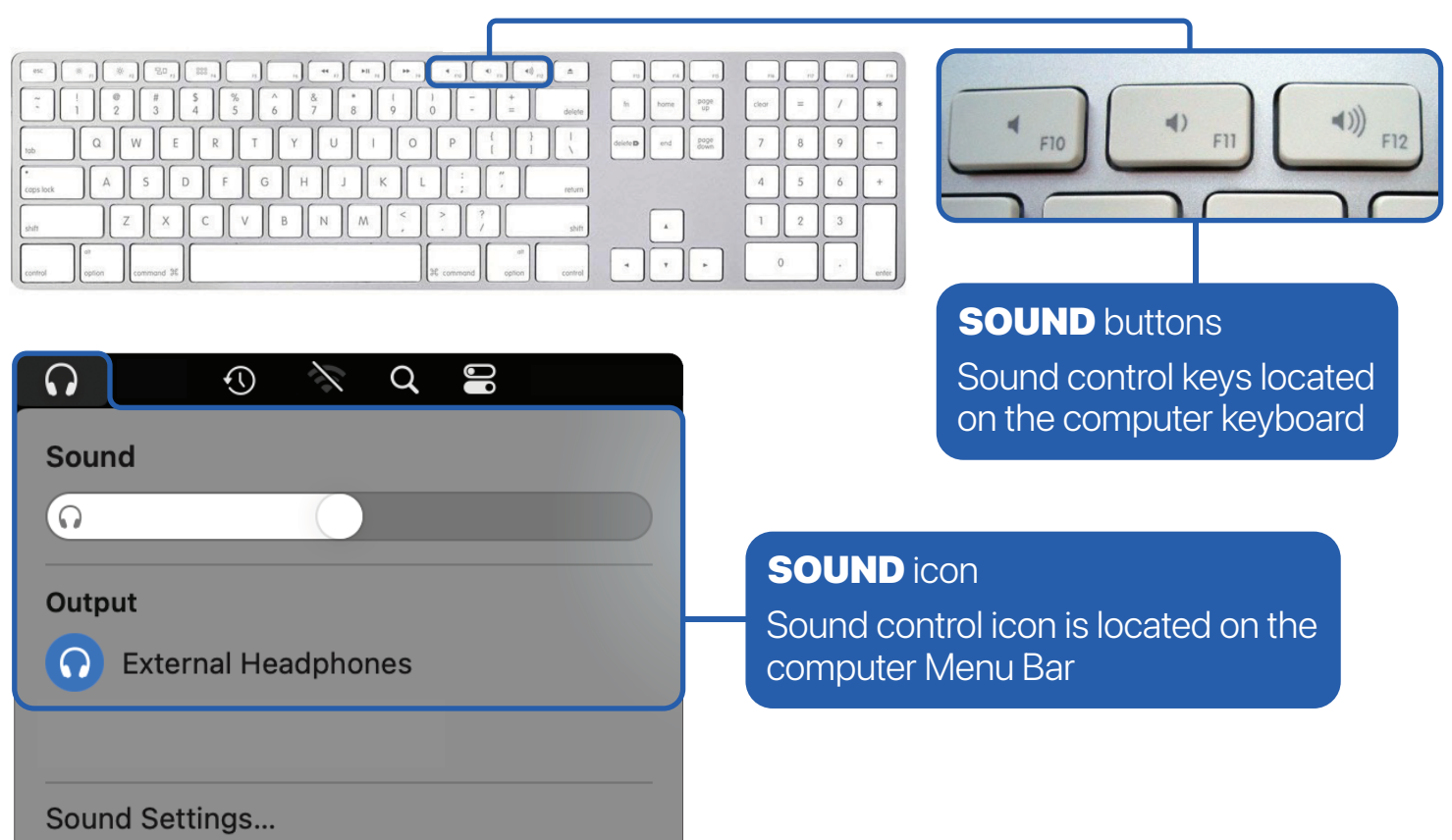
Instructions on how to use the **N320F / Computer Lab** cart's computer, a/v equipment, connected cables, etc.

1 PROJECTOR & SOUND Settings

- Projector:**
- To **turn on** the projector, press the **ON** button on the remote
 - To **turn off** the projector, press the **OFF** button on the remote **twice**
 - Please remember to **turn off** the projector before leaving the room
 - It's best to stand directly 4-6 feet in front of the projector and point the remote directly at it when turning it **ON/OFF**
 - If needed, press the **SOURCE** button and select input **HDMI 1** to connect the Mac mini to the projector

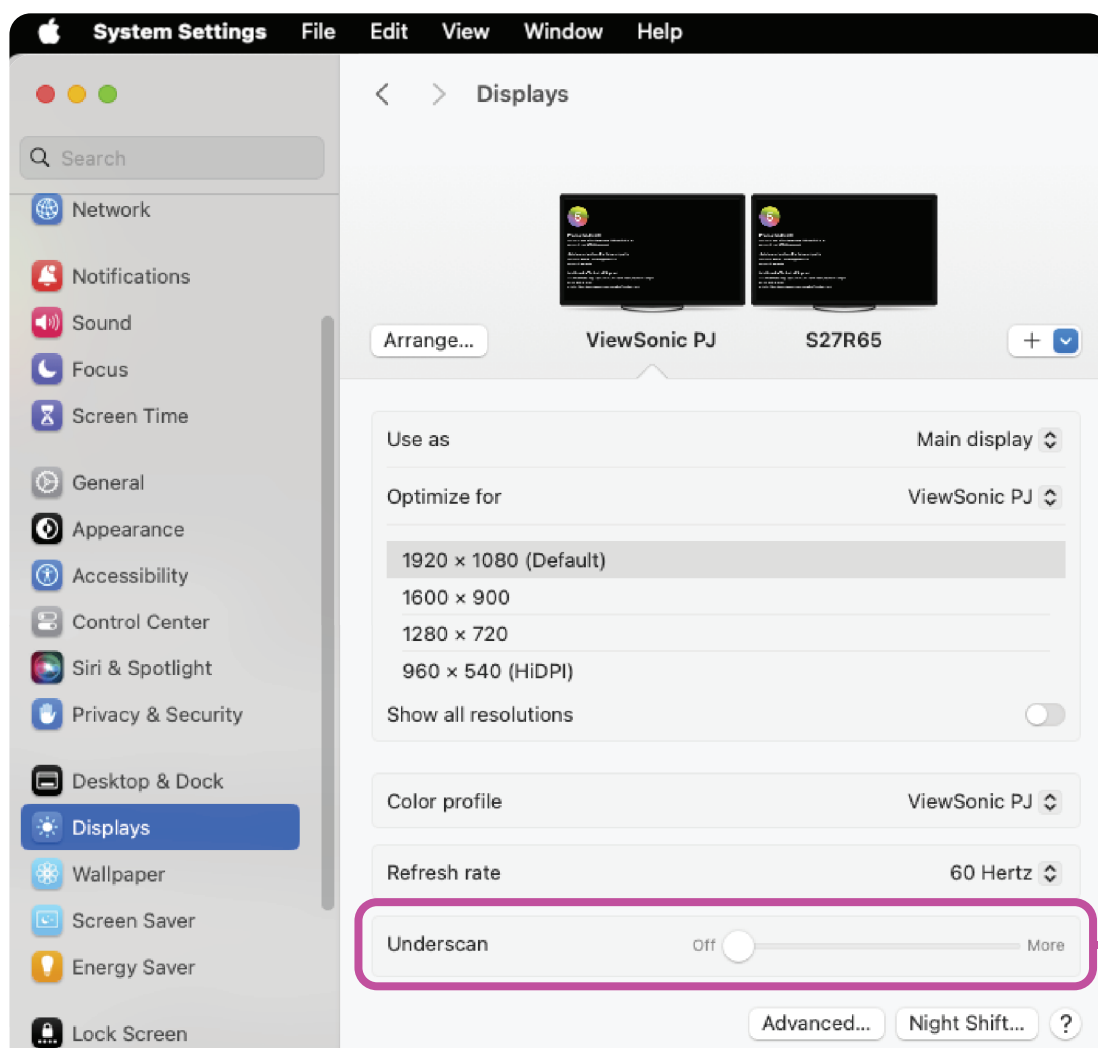


- Sound:**
- Use the **sound controls** on the **keyboard** or in the **Menu Bar** to adjust the **Mac mini's** outputted volume level



System Settings | Mac mini (computer)

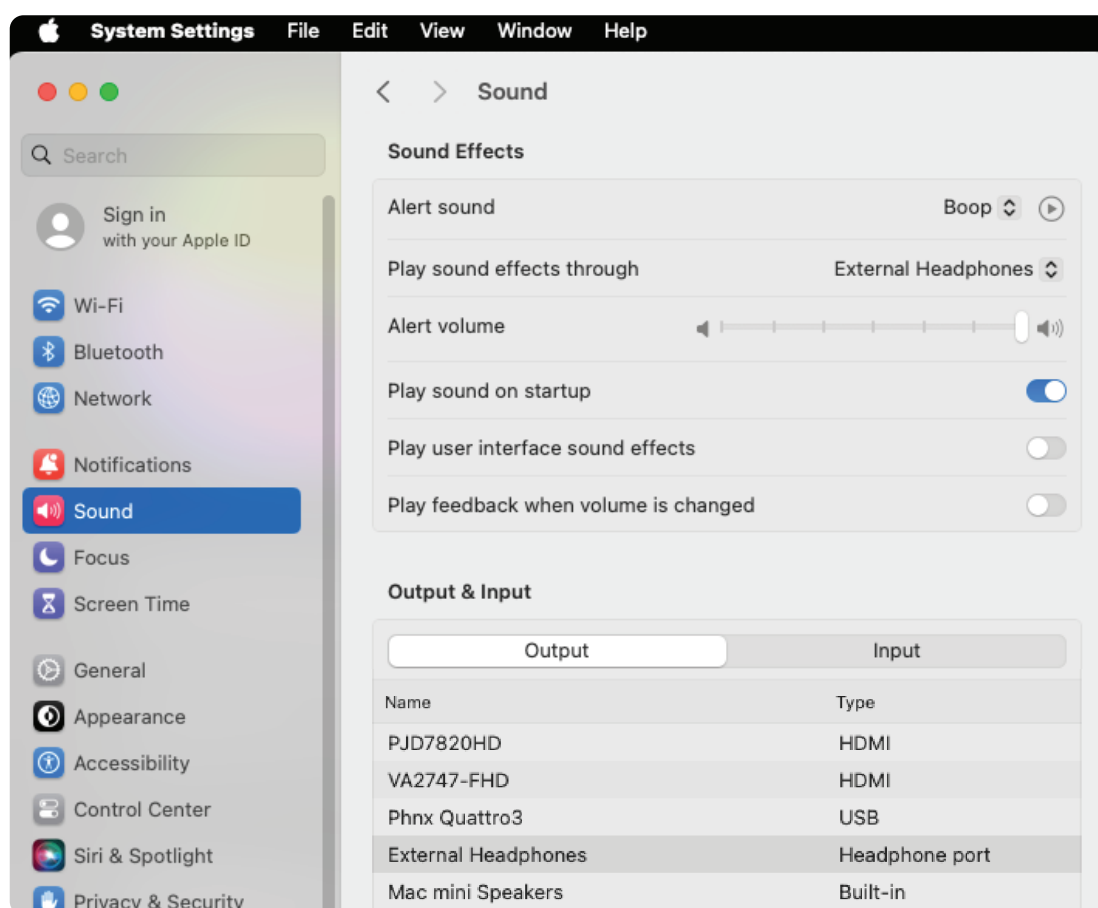
Check: ● **VIDEO:** **Apple** > System Settings > Display > S27R65 (Mirror/Optimize for ViewSonic PJ)



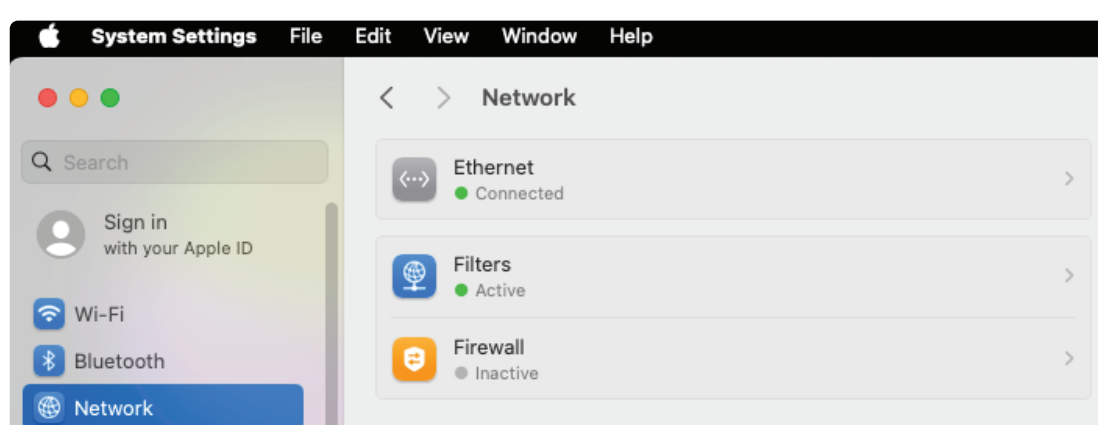
Fix Under/Overscan

If needed, to fix Under/Overscanning of the projected image, go to System Settings > Displays and use the Under/Overscan slider to properly fit the computer's image

● **SOUND:** **Apple** > System Settings > Sound > Output > External Headphones

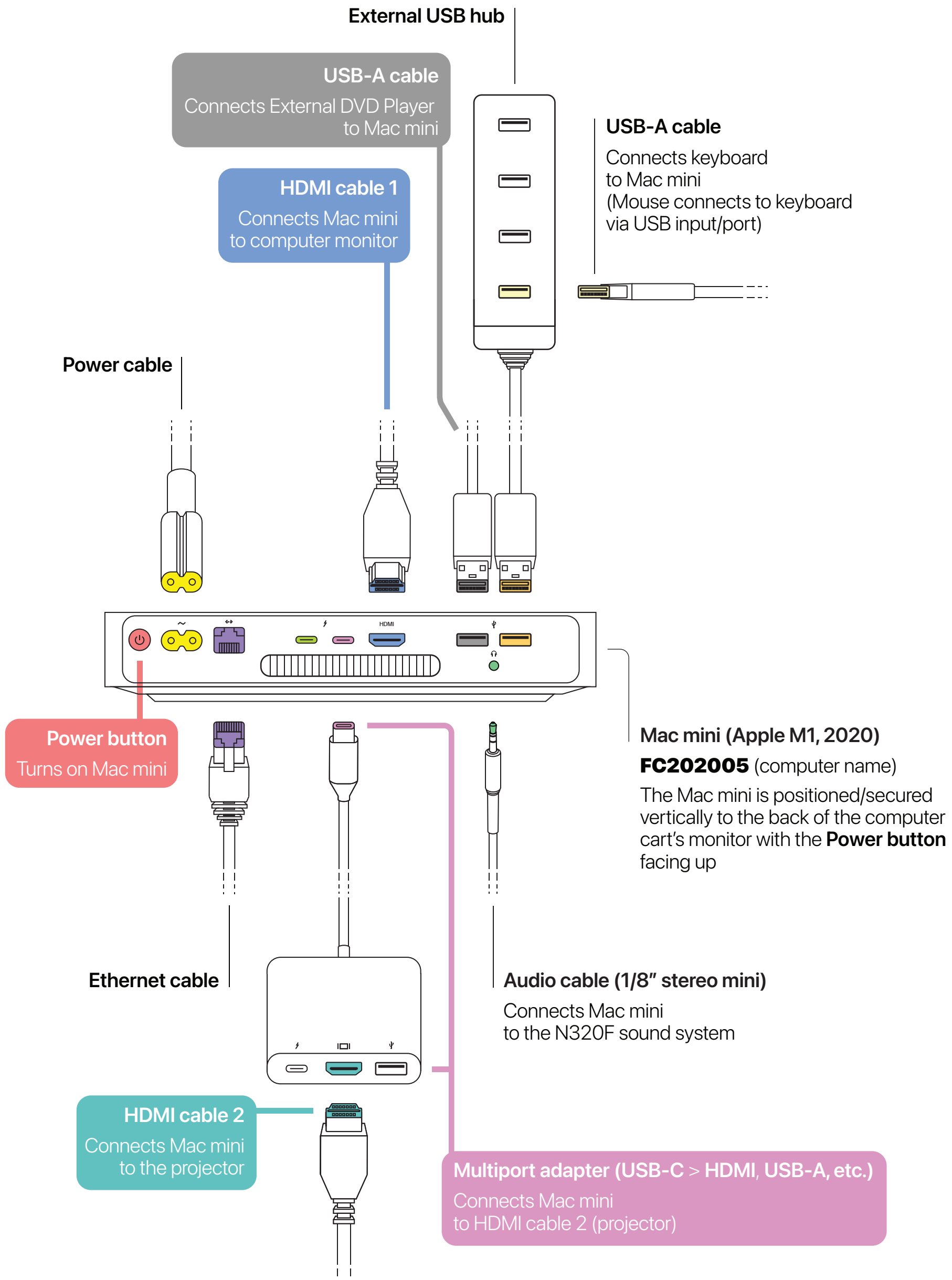


● **INTERNET:** **Apple** > System Settings > Network > Ethernet (Connected)



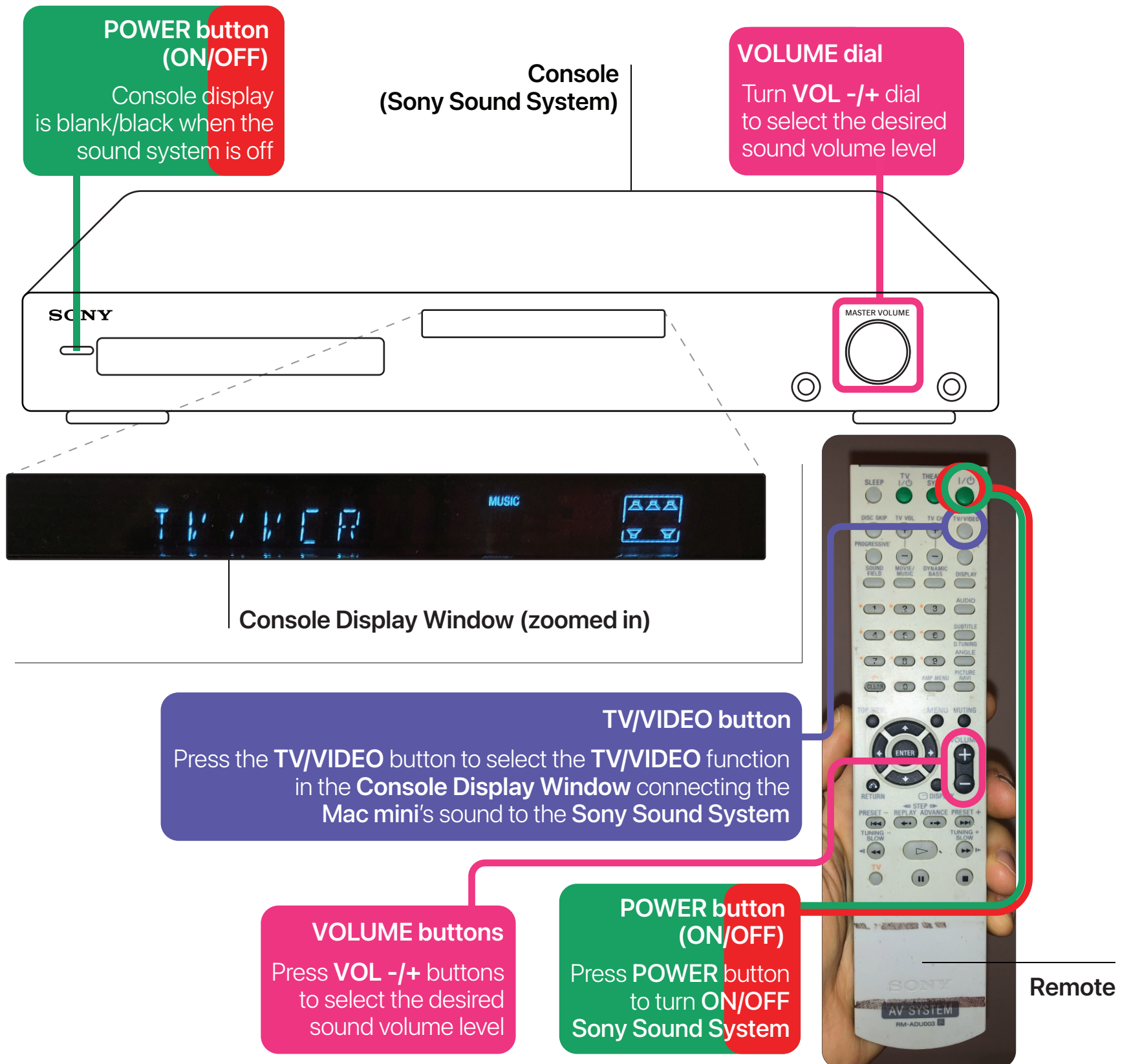
Check Cable Connections

- Make sure:**
- the **Mac mini** is turned on (press **Power button** if it's turned off)
 - **HDMI cable 1** is firmly attached to the **HDMI port** on the Mac mini
 - the **Multiport adapter** is firmly attached to the **Thunderbolt / USB 4 port** on the Mac mini
 - **HDMI cable 2** is firmly attached to the **HDMI port** on the **Multiport adapter**

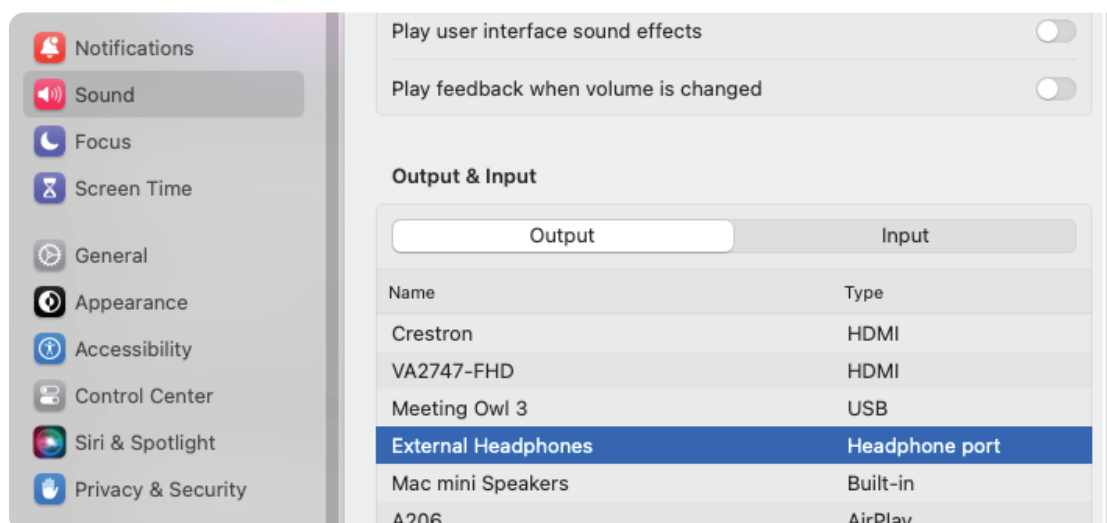


Sony Sound System

- Speaker:**
- When the **Sony Sound System** is turned off the Display Console is **blank/black**
 - To **turn on** the **Sony Sound System**, press the **POWER** button located on the remote (top right button)
 - After **turning on** the **Sony Sound System**, press the **TV/VCR** button until the **TV/VCR** function is selected in the **Console Display Window**



Computer: ● **SOUND:** **Apple > System Settings > Sound > External Headphones**



External DVD Player

- The **External DVD Player** is installed vertically on the side of the Mac mini (computer) and connects to it via USB-A cable (see **3 Check Cable Connections**)
- To **open** the **External DVD Player's Disc Tray**, press the **EJECT** button
 - When the **Disc Tray** opens (pops out), carefully place the DVD disc onto it
 - After placing the DVD disc onto the **Disc Tray**, **close** the **External DVD Player** by gently pushing the **Disc Tray** back into the device



- The **External DVD Player** will load the DVD and automatically open the "Viewer" window of **DVD Player**, a software application on the Mac mini
 - If the DVD disc doesn't play automatically, press the Space bar after the disc is recognized
 - Move the pointer anywhere over the "Viewer" window to show the playback controls ~ e.g. click play button to start the DVD's video, click menu button to access the DVD's menu, etc.
 - When finished watching the DVD, close **DVD Player** and move the DVD's icon on the desktop into the trash to eject the disc from the **External DVD Player**



- To manually eject and retrieve the DVD disc from the **External DVD Player**, press the **EJECT** button to **open** the **Disc Tray**
 - When the **Disc Tray** opens (pops out), carefully remove the DVD disc
 - After removing the DVD disc from the **Disc Tray**, **close** the **External DVD Player** by gently pushing the **Disc Tray** back into the device