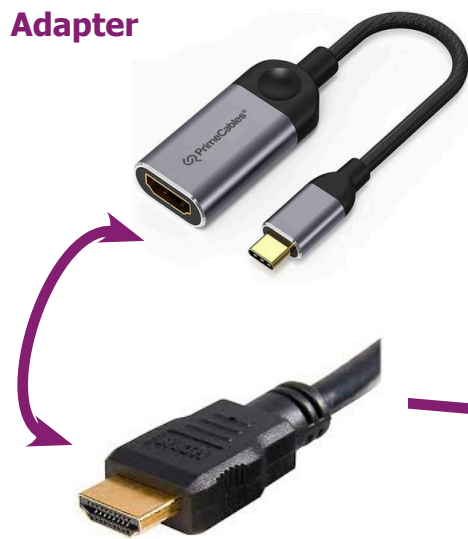


P204 AV Set Up

USBC-HDMI Adapter



HDMI



Patch Box




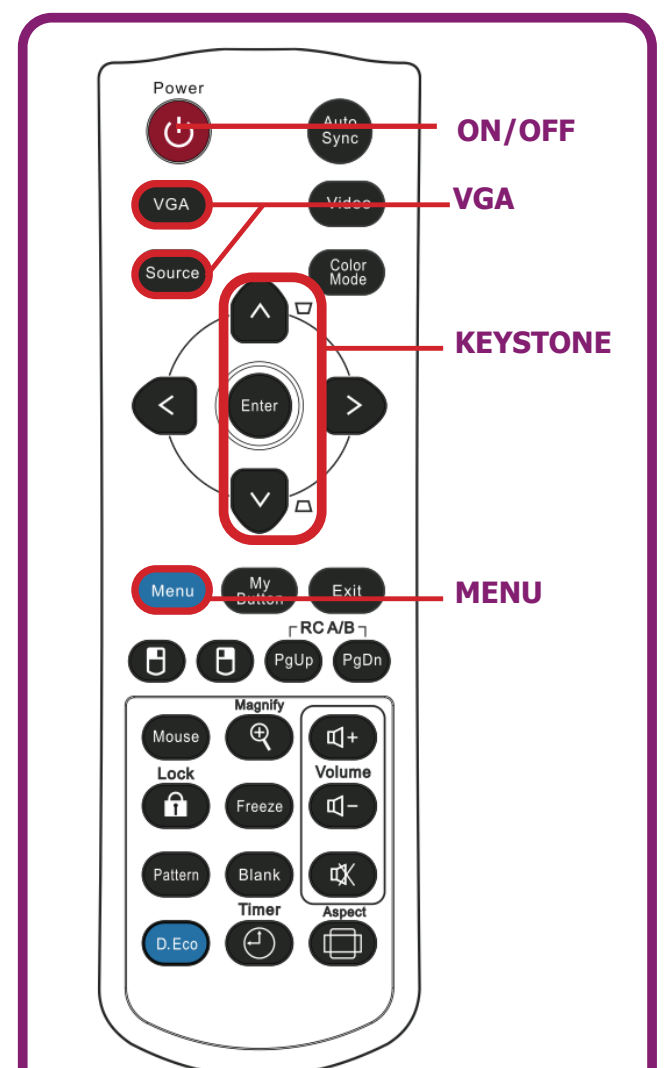
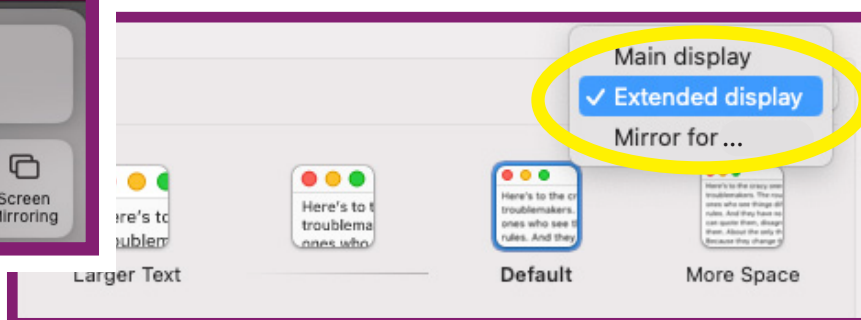
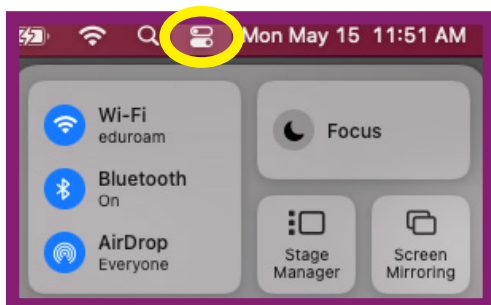
Speakers

1. Check Cable Connections

- Make sure all cables and adapters are firmly connected.
- If you don't see an image, or it is very distorted, detach and re-attach the adapter. Display resolution details are in **Step 2**.

2. Projector Settings

- Turn **on** the iMac first
- Turn **on** the projector using the remote. (point remote to projection wall)
- Set projector input to **HDMI** with **SOURCE** button on remote.
- To **mirror** or **extend** your image, click the **Control Centre Button**  on the top right of screen. Select **Screen Mirroring** and then **Display Settings**.

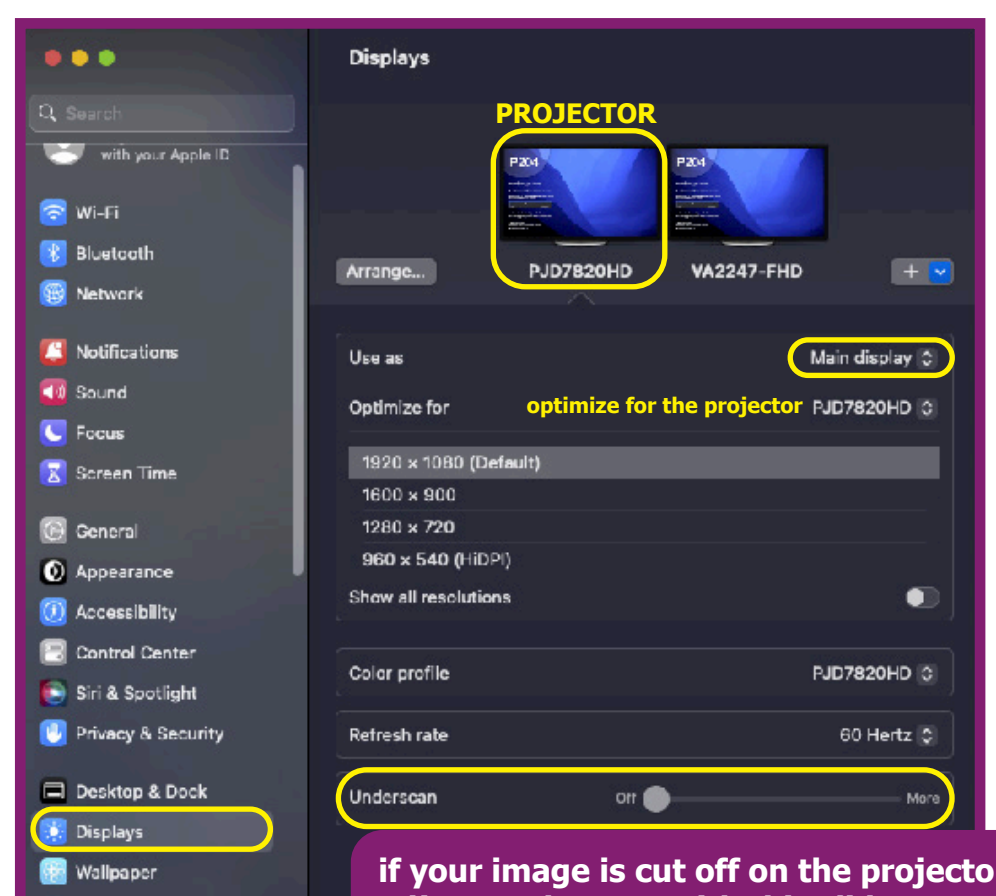
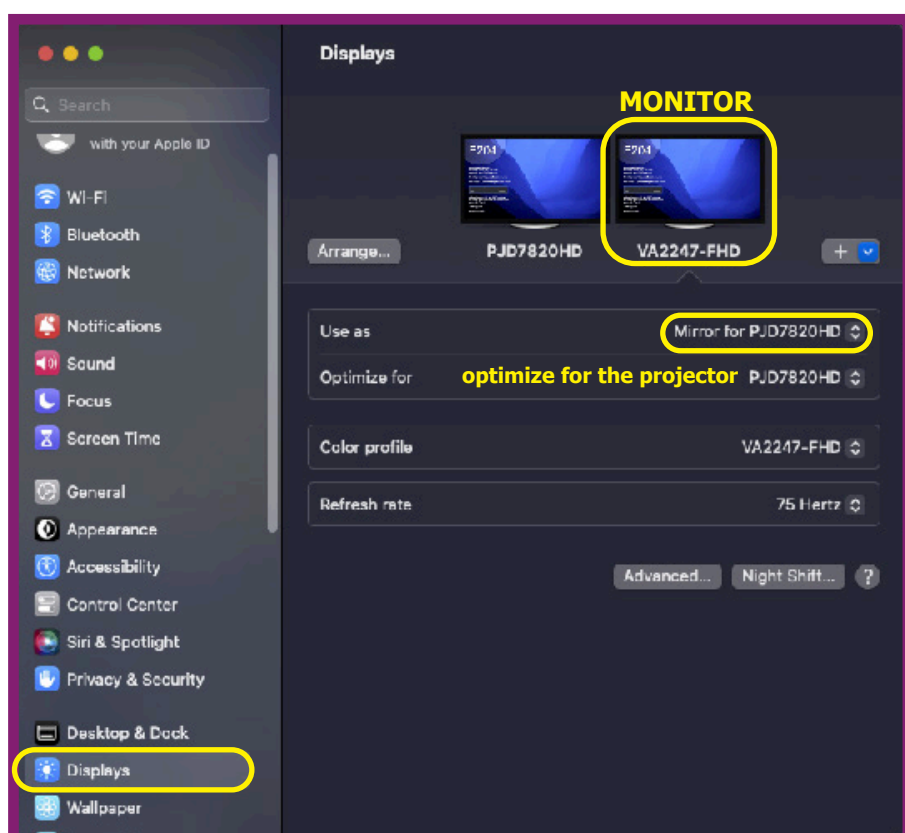


DO NOT leave projector set to 4 by 3 ratio!
Press **menu** button, under **ASPECT RATIO**, select **AUTO**.

KEYSTONE IMAGE:
If image is warped, and appears as a trapezoid, use KEYSTONE buttons on remote to straighten.

3. Resolution Settings

- To adjust resolution, open **System Settings**, and go to **Displays**
- Set resolution for **monitor** and **projector** as shown below



* For further assistance, please visit the Port Multimedia Office, in Room P228.

if your image is cut off on the projector, adjust Underscan with this slider